



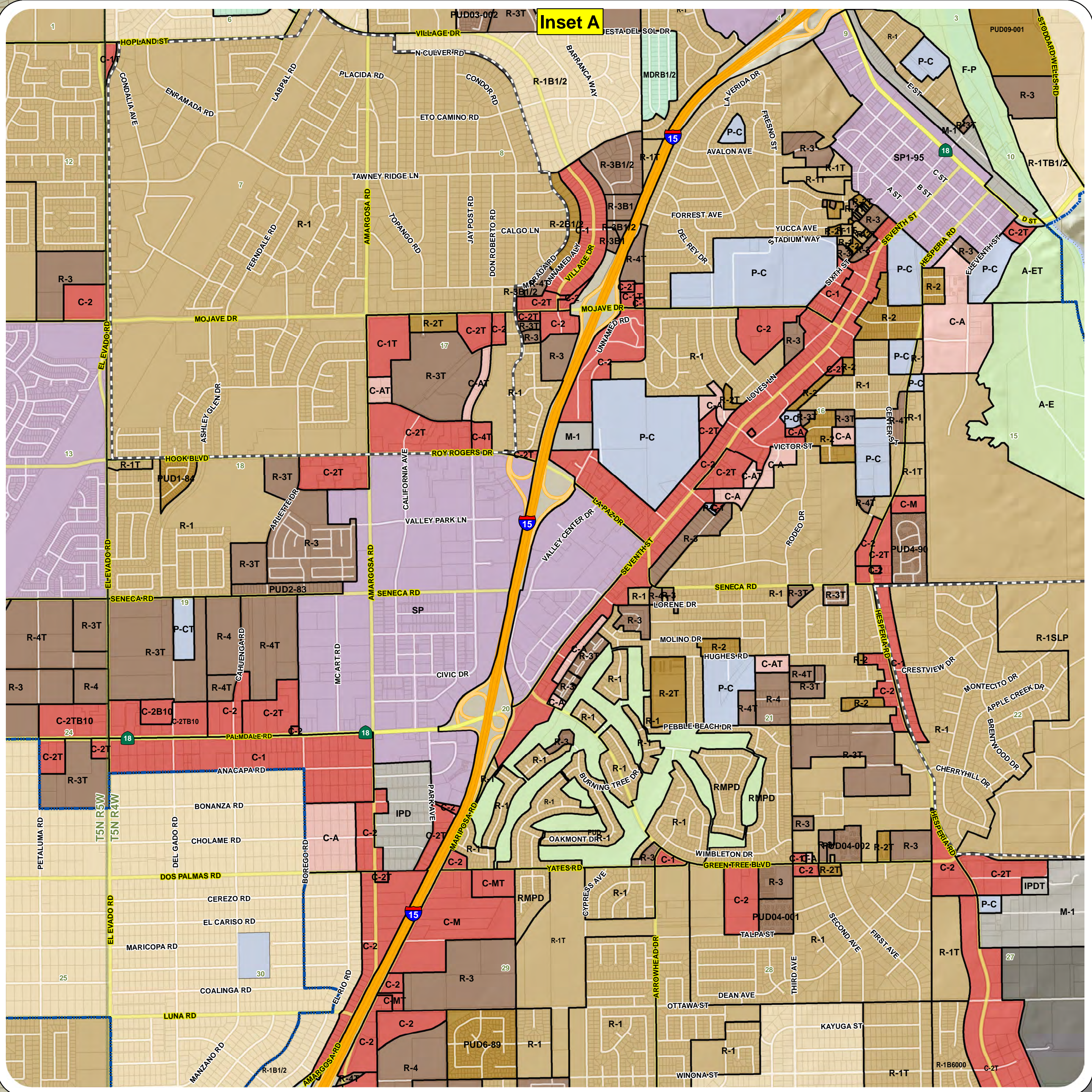
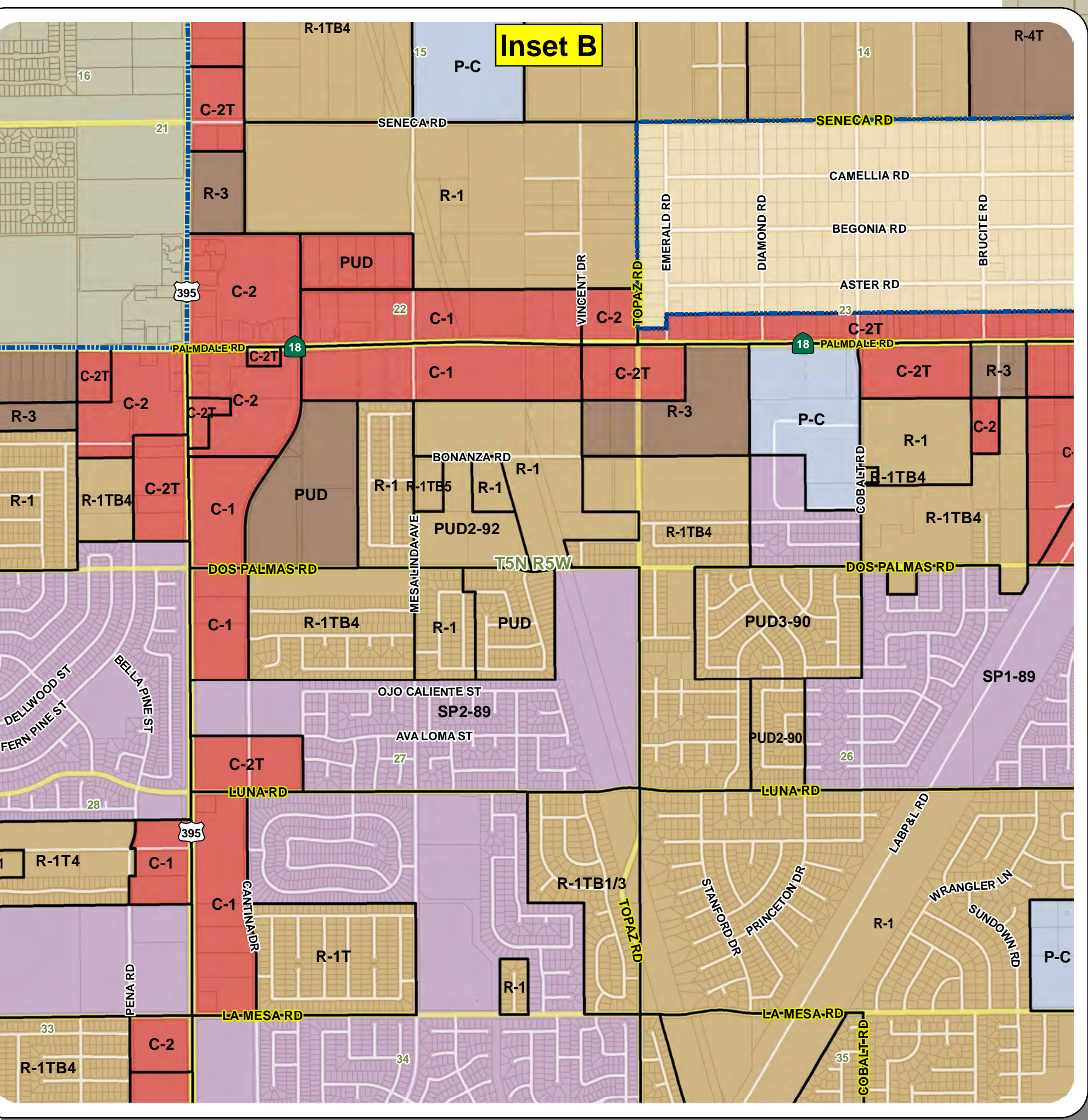
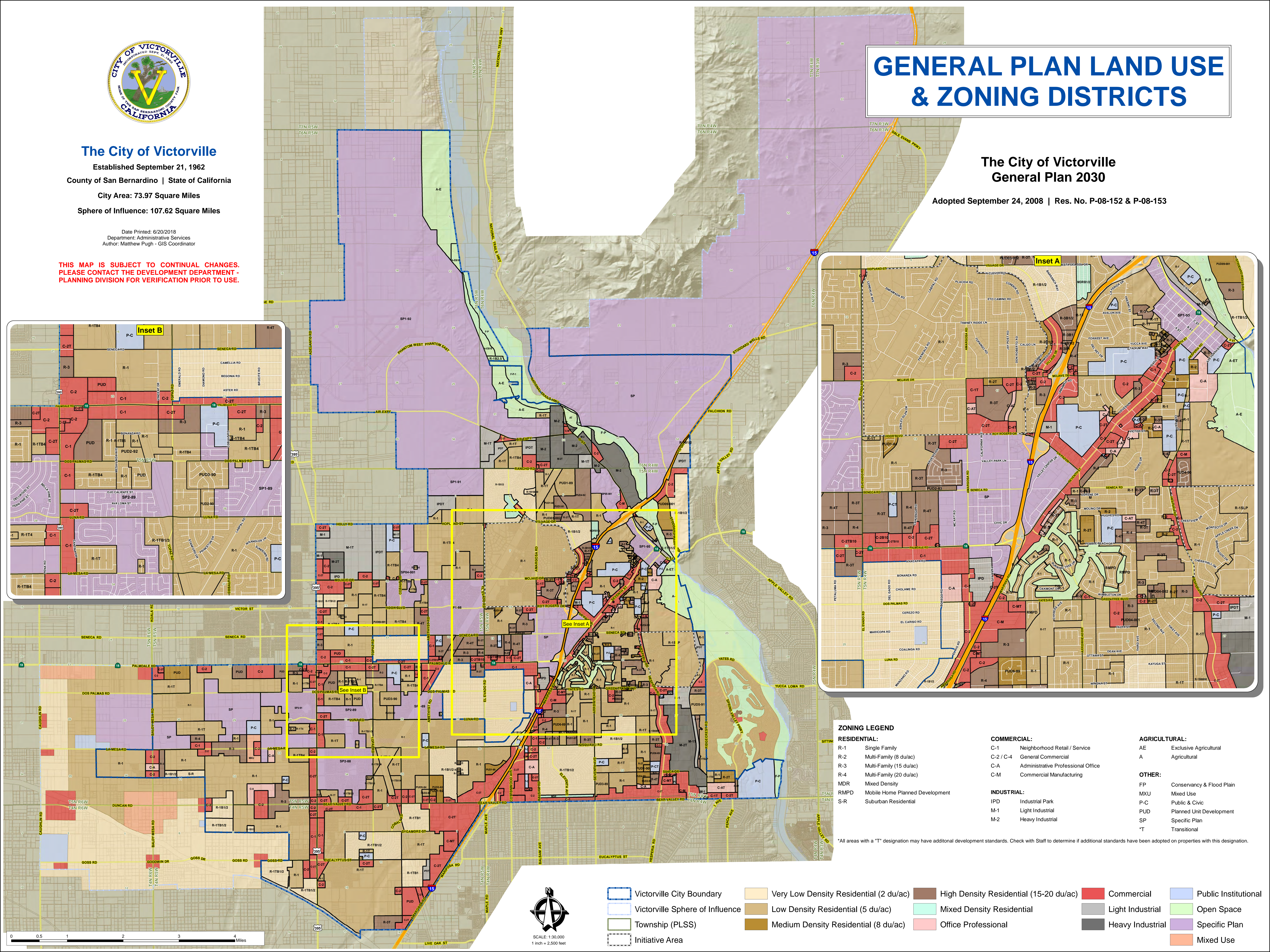
**The City of Victorville**  
 Established September 21, 1962  
 County of San Bernardino | State of California  
 City Area: 73.97 Square Miles  
 Sphere of Influence: 107.62 Square Miles  
 Date Printed: 6/20/2018  
 Department: Administrative Services  
 Author: Matthew Pugh - GIS Coordinator

**THIS MAP IS SUBJECT TO CONTINUAL CHANGES.  
 PLEASE CONTACT THE DEVELOPMENT DEPARTMENT -  
 PLANNING DIVISION FOR VERIFICATION PRIOR TO USE.**

# GENERAL PLAN LAND USE & ZONING DISTRICTS

**The City of Victorville  
 General Plan 2030**

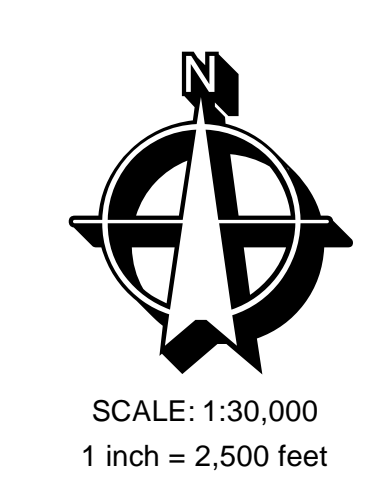
Adopted September 24, 2008 | Res. No. P-08-152 & P-08-153



**ZONING LEGEND**

<b>RESIDENTIAL:</b>	<b>COMMERCIAL:</b>	<b>AGRICULTURAL:</b>
R-1 Single Family	C-1 Neighborhood Retail / Service	AE Exclusive Agricultural
R-2 Multi-Family (8 du/ac)	C-2 / C-4 General Commercial	A Agricultural
R-3 Multi-Family (15 du/ac)	C-A Administrative Professional Office	
R-4 Multi-Family (20 du/ac)	C-M Commercial Manufacturing	<b>OTHER:</b>
MDR Mixed Density		FP Conservancy & Flood Plain
RMPD Mobile Home Planned Development	<b>INDUSTRIAL:</b>	MXU Mixed Use
S-R Suburban Residential	IPD Industrial Park	P-C Public & Civic
	M-1 Light Industrial	PUD Planned Unit Development
	M-2 Heavy Industrial	SP Specific Plan
		*T Transitional

\*All areas with a "T" designation may have additional development standards. Check with Staff to determine if additional standards have been adopted on properties with this designation.



Victorville City Boundary	Very Low Density Residential (2 du/ac)	High Density Residential (15-20 du/ac)	Commercial	Public Institutional
Victorville Sphere of Influence	Low Density Residential (5 du/ac)	Mixed Density Residential	Light Industrial	Open Space
Township (PLSS)	Medium Density Residential (8 du/ac)	Office Professional	Heavy Industrial	Specific Plan
Initiative Area			Mixed Use	

SCALE: 1:30,000  
 1 inch = 2,500 feet