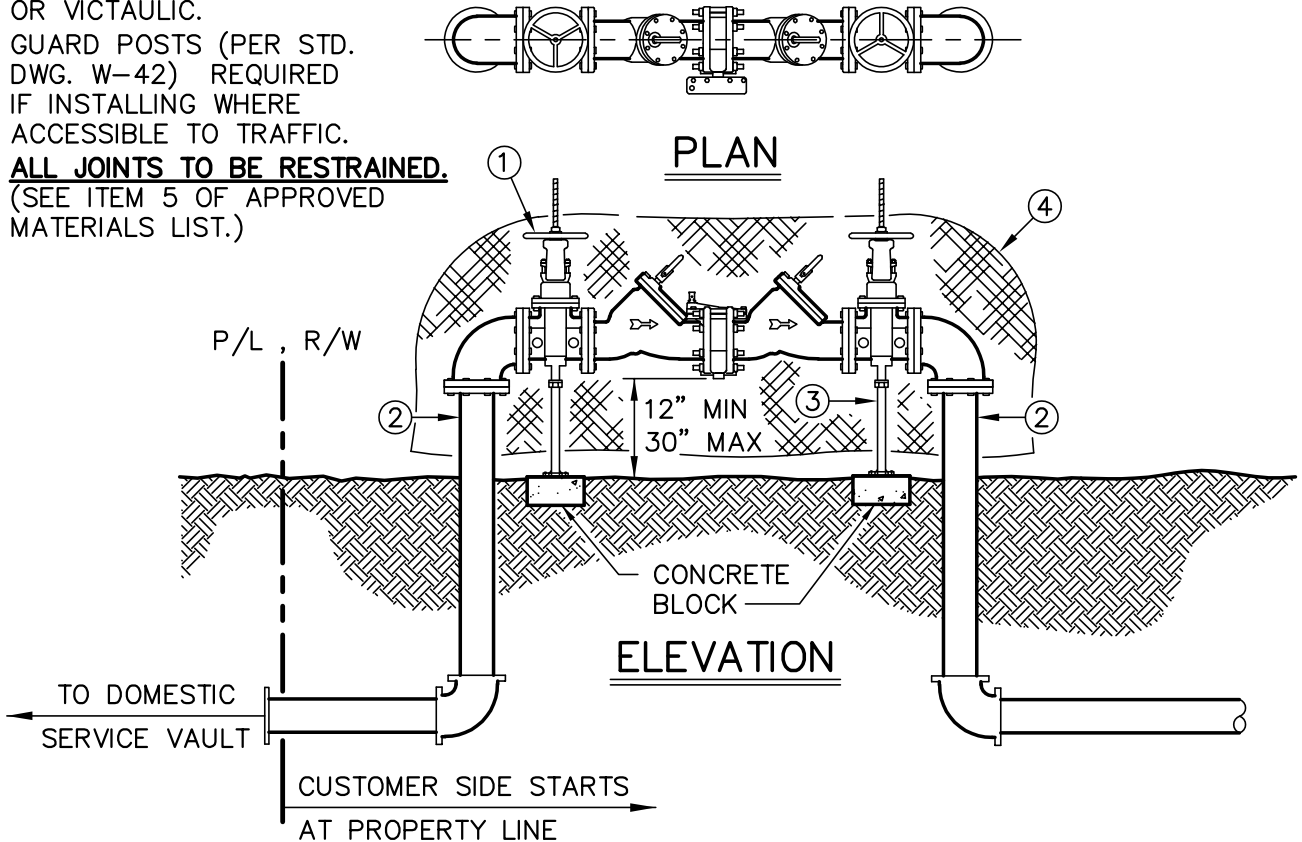


NOTES:

- A. REDUCED PRESSURE BACKFLOW ASSEMBLY SHALL BE INSTALLED IN A LOCATION APPROVED BY VWD.
- B. REDUCED PRESSURE BACKFLOW ASSEMBLY SHALL BE INSTALLED HORIZONTAL AND PLUMB.
- C. ASSEMBLIES MUST BE USC & CDPH APPROVED.
- D. RPBD MUST BE TESTED BY A CERTIFIED CITY BACKFLOW TESTER PRIOR TO WATER SERVICE BEING ACTIVATED. A COPY OF THE TEST MUST BE SUBMITTED TO THE INSPECTOR.
- E. ALL ASSEMBLIES 3" AND LARGER SHALL BE FLANGED OR VICTAULIC.
- F. GUARD POSTS (PER STD. DWG. W-42) REQUIRED IF INSTALLING WHERE ACCESSIBLE TO TRAFFIC.
- G. **ALL JOINTS TO BE RESTRAINED.** (SEE ITEM 5 OF APPROVED MATERIALS LIST.)



ITEM	DESCRIPTION	APPROVED MATERIAL LIST NUMBER
1	REDUCED PRESSURE ASSEMBLY	12-A
2	PIPE, SAME SIZE AS METER SERVICE LINE	1-C
3	ADJUSTABLE PIPE SUPPORT (REQUIRED FOR 6" & LARGER)	13-C
4	INSULATING BAG	4-B

CITY OF VICTORVILLE - ENGINEERING DEPARTMENT

REV.	DATE	BY	3" AND LARGER - REDUCED PRESSURE BACKFLOW DEVICE INSTALLATION	W-30
3	02/01/17	STAFF	BRIAN W. GENGLER, CITY ENGINEER	SHEET 1 OF 1
2	12/18/14	STAFF		