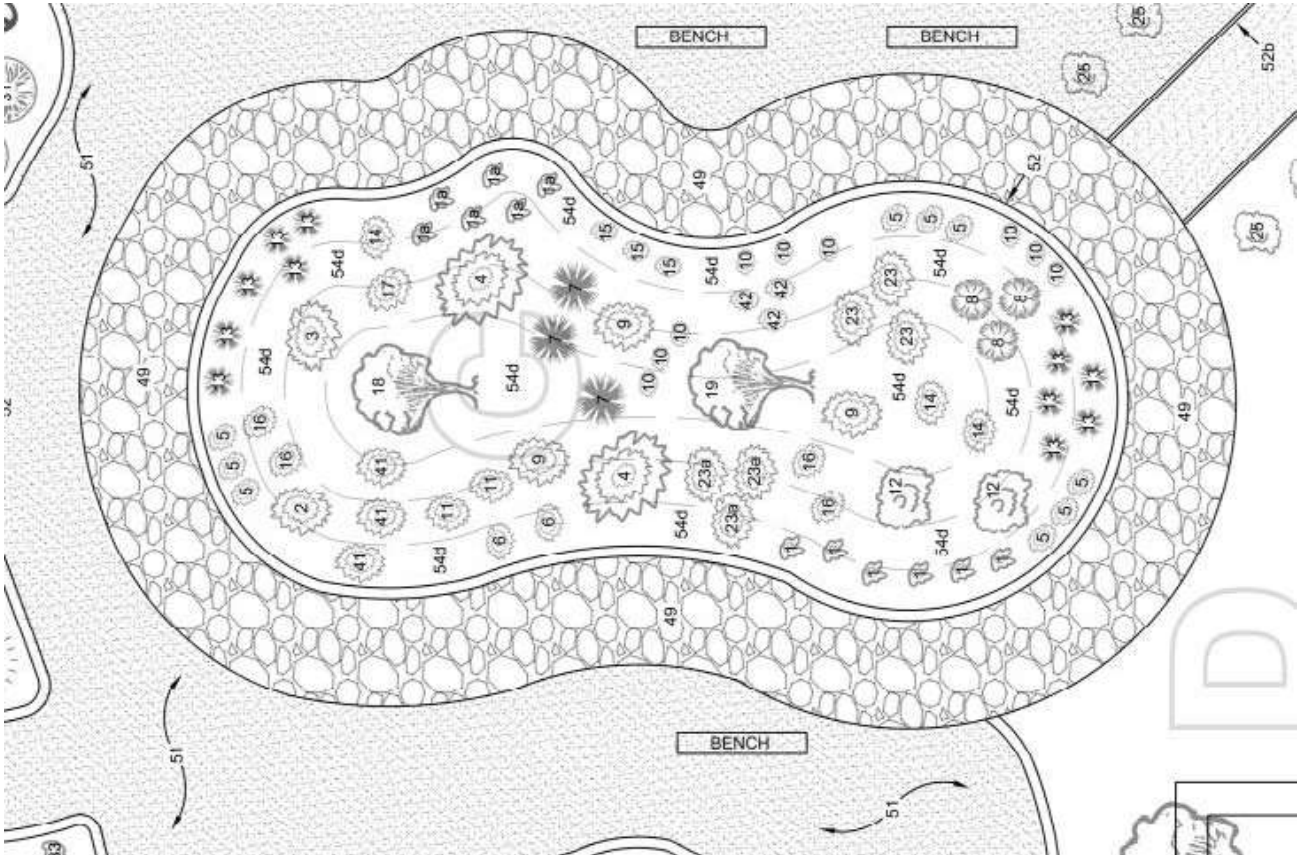


GARDEN AREA C



C GARDEN AREA-Perennial Flowers							
Planting Area SQ FT: 774 SQ FT							
PLANT DESCRIPTION							
TYPE	#	Common	Botanical	Qty	Tall/Wide	Spacing -ft	Water Needs
GC	1	Thyme creeping -sleeps in winter	<i>Thymus serpyllum</i>	6	3" x 3	1	M
GC	1a	Woolly Thyme	<i>Thymus pseudolanuginosus</i>	6	3" x 3	1	M
P	2	Chocolate Flower	<i>Berlandiera lyrata</i>	1	1 x 2	1.5	M
SP	3	Spanish Lavender	<i>Lavandula stoechas</i>	1	4 x 3	3	M
SP	4	Scarlet Globe Mallow -orange	<i>Sphaeralcea coccinea</i> or <i>ambigua</i>	2	5 x 5	2	L
GC	5	Snow in summer	<i>Cerastium tomentosum</i>	9	1 x 1	2	M
P	6	Whirling Butterflies	<i>Gaura Lindheimeri</i>	2	1 x 2	3	M
P	7	Little Bluestem	<i>Schizachyrium scoparium</i>	3	3 x 2	3	M
P	8	Blue Oat grass	<i>Helictotrichon Sempervirens</i>	3	2 x 2	1.5	M
P	9	Cone flower	<i>Echinacea purpurea</i>	2	4 x 2	2	M
GCP	10	Angelita Daisy	<i>Tetranneuris acaulis</i>	9	1 x 1	1	L-M
SP	11	Hummingbird Mint	<i>Agastache rupestris</i>	2	3 x 2	2	M
GCS	12	Barberry -Crimson Pygmy	<i>Berberis thunbergii</i>	2	2 x 3	3	L
P	13	Blue Fescu -Elijah Blue	<i>Festuca glauca</i>	12	18" x 2'	1	M
P	14	Coreopsis	<i>Lanceolata</i>	3	2 x 2	2	M
P	15	Prairi Zinnia	<i>Zinnia grandiflora</i>	3	1 x 1	1.5	L-M

P	16	Yarrow -Ca Native	<i>Achillea millefolium 'Rosea'</i>	4	3 x 2	2	M
GCP	17	Yarrow -Wooly (White)	<i>achillea tomentosa</i>	1	3 x 2	2	M
TS	18	Crape Myrtle -Muskogee	<i>Lagerstroemia indica x fauriei</i>	1	20 x 10	15	M
TS	19	Crape -white	<i>Lagerstroemia indica 'Whit III'</i>	1	8 x 10	15	M
P	23	Penstemon Firecracker		3	2 x 3	2	L-M
P	23a	Penstemon -hybrid beardtongue	Margarita Bop- CA Native	3	2 x 3	2	L-M
p	41	Shasta Daisy	<i>Leucanthemum x superbum</i>	3	3 x 2	2	M
GC	42	Sun drops	Calylophus, Sundrops	3	1 x 1	1	M
	49	Flagstone grouted in					
	51	Decomposed Granite					
	52	Mow Curb					
	54d	Compost 3" depth					

Legend: S-shrub, P-perennial, GC-ground cover, T-Tree

L-low water, M-Medium Water, O-no water

Demonstration **Garden Area C** - Photo Sheet



10
Angelita Daisy



15
Prairie Zinnia



1
Creeping thyme



12
Crimson Barberry Pygmy



23
Firecracker Penstemon



23a
Beardtongue Penstemon



19
White Crape Myrtle



18
Purple Crape Myrtle



4
Globe Mallow

Demonstration **Garden Area C**- Photo Sheet 2



41
Shasta Daisy



14
Coreopsis



6
Whirling 'butterfly'



2
Chocolate Flower



16
Yarrow -Rosea Ca Native



8
Blue Oat Grass



42
Sundrops



17
White Yarrow



5
Snow in summer



9
Coneflower



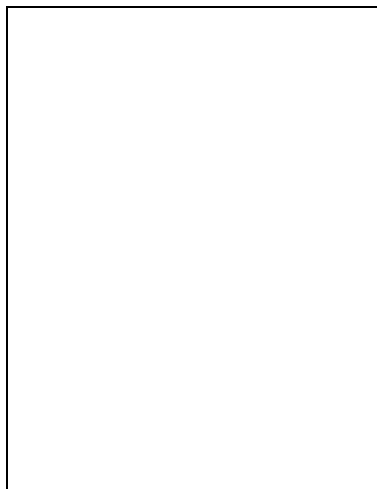
3
Spanish lavender



1a
Woolly Thyme



11
Hummingbird Mint



13
Blue Fescue

