



*Southern California*

## LOGISTICS AIRPORT

November 4, 2024

**ADDENDUM NO. 1  
BUILDING 321 INTERIOR DEMOLITION  
PROJECT CC25-043**

The attached constitutes additional information and serves to clarify issues (considered to be part of the “**BUILDING 321 INTERIOR RENOVATIONS**” project).

1. **QUESTION:** Is there a report for the asbestos?  
**ANSWER:** Yes, see attached.
2. **QUESTION:** Is the elevator staying or being demolished?  
**ANSWER:** Protect in place elevator and elevator shaft.
3. **QUESTION:** Are the window frames staying?  
**ANSWER:** Window frames are to be removed and disposed of.
4. **QUESTION:** What do you want done with the Stucco?  
**ANSWER:** The Stucco will stay in place.
6. **QUESTION:** Could you please provide plans of the existing layout of the building?  
**ANSWER:** Yes, see attached.
7. **QUESTION:** Will fencing around the building be provided by the owner or by the contractor?  
**ANSWER:** The Contractor.
8. **QUESTION:** Will a source of water be provided by the owner?  
**ANSWER:** A hydrant is located on the north side of the building. The Contractor shall provide their own water meter though the City of Victorville Water department.
9. **QUESTION:** Is there another access to the basement besides the stairs and elevator?  
**ANSWER:** No, stairs and elevator are the only access to the basement.
10. **QUESTION:** Are any of the interior non-structural metal stud walls being demolished on the building? If so, could you please mark down the walls that will remain in place.  
**ANSWER:** All non-structural metal studs shall be removed and disposed of.

11. **QUESTION:** Is the building structurally sound to set up equipment (scissor lifts, skid steer) of first and second floors?

**ANSWER:** The use of equipment is at the sole discretion of the Contractor, at the Contractor's sole risk. The Contractor shall be responsible for any damages done to the load-bearing walls, subfloor, and any other building components not designated for demolition.

12. **QUESTION:** What license is required for this project?

**ANSWER:** General A or B license.

13. **QUESTION:** Does the roof stay?

**ANSWER:** Yes.

**ATTACHMENTS:**

- Pre-bid Sign-in Sheet
- Pre-bid Meeting Agenda
- Building Plan
- Asbestos Report

Should you have any questions or concerns regarding this project or any of the project documentation, please email or fax them to Celeste Calderon, Finance Specialist at [cmcalderon@victorvilleca.gov](mailto:cmcalderon@victorvilleca.gov)

Please confirm receipt of this Addendum #1, by attaching the signed acknowledgment to your Bid Proposal. Failure to acknowledge receipt of this addendum may result in your Bid Proposal being rejected as non-responsive.

**The undersigned acknowledges receipt of ADDENDUM #1:**

Name of Bidder \_\_\_\_\_

Address \_\_\_\_\_

Phone #: \_\_\_\_\_ Email Address: \_\_\_\_\_

Signature: \_\_\_\_\_

**Addendum #1 Approved:**

C. Eric Ray \_\_\_\_\_ 11/4/2024 \_\_\_\_\_  
C. Eric Ray, Airport Director Date

**MANDATORY PRE-BID/JPB WALK MEETING**  
**PROJECT NAME: BUILDING 321 INTERIOR DEMOLITION**  
**PROJECT #: CC25-043**

**OCTOBER 28, 2024 @10:00 a.m.**

<b>COMPANY NAME &amp; REPRESENTATIVE</b>	<b>ADDRESS</b>	<b>PHONE #</b>	<b>E-MAIL</b>
CELESTE CALDERON, FINANCE SPECIALIST	14343 CIVIC DR. VICTORVILLE, CA 92392	760-955-5079	<a href="mailto:CMCALDERON@VICTORVILLECA.GOV">CMCALDERON@VICTORVILLECA.GOV</a>
SAMUEL EVANS, AIRPORT BUSINESS ANALYST		760-243-1939	<a href="mailto:SEEVANS@VICTORVILLECA.GOV">SEEVANS@VICTORVILLECA.GOV</a>
SISCO ELEKANA, AIRPORT MAINT. WORKER		760-243-1912	<a href="mailto:SELEKANA@VICTORVILLECA.GOV">SELEKANA@VICTORVILLECA.GOV</a>
MANUEL TORRES, MAINT. SUPERVISOR		760-243-1914	<a href="mailto:MTORRES@VICTORVILLECA.GOV">MTORRES@VICTORVILLECA.GOV</a>
JOSE GUTIERREZ – SCLA		760-243-1908	<a href="mailto:JGUTIERREZ@VICTORVILLECA.GOV">JGUTIERREZ@VICTORVILLECA.GOV</a>
<b>CONTRACTORS</b>			
INTERIOR DEMOLITION, COLE LOPEZ	23508 PINE ST. NEWHALL CA 91321	661-644-6846	<a href="mailto:COLE@INTERIORDEMOLITION.NET">COLE@INTERIORDEMOLITION.NET</a>
MOJAVE BLUE INC, MICHAEL DRENSKE	14043 PIONEER RD#2 APPLE VALLEY, CA 92307	760-559-3149	<a href="mailto:MIKE@MOJAVEBLUEHAZMAT.COM">MIKE@MOJAVEBLUEHAZMAT.COM</a>
POWERLINE ELECTRIC, LUIS RODRIGUEZ	16775 SAN BERNARDINO AVE #23 FONTANA, CA 92335	909-770-0046	<a href="mailto:POWERLINE480V@GMAIL.COM">POWERLINE480V@GMAIL.COM</a>
RODOLFO A. JAVIER NOTARIO, HANDS CONSTRUCTION CORP	9966 LINCOLN AVE. HESPERIA, CA 92345	760-978-1949	<a href="mailto:HANSDCONSTRUCTIONCO88@GMAIL.COM">HANSDCONSTRUCTIONCO88@GMAIL.COM</a>
INTEGRATED DEMO & REMEDIATION	421 E. CERRITOS AVE, ANAHEIM, CA 92805	714-483-1534	<a href="mailto:JAY@IDRDEMO.COM">JAY@IDRDEMO.COM</a>
PARC DEMOLITION, DANIEL SANCHEZ	2864 E. DOROTHY AVE. FRESNO, CA	559-999-5427	<a href="mailto:DSANCHEZ@PARCENVIRONMENTAL.COM">DSANCHEZ@PARCENVIRONMENTAL.COM</a>

COMPANY NAME & REPRESENTATIVE	ADDRESS	PHONE #	E-MAIL
ACT, INC.	1698 WEST 9 <sup>TH</sup> ST. UPLAND, CA 91786	909-908-4311	<a href="mailto:WAYNE@ASBESTOSCONTROL.NET">WAYNE@ASBESTOSCONTROL.NET</a>
PINEDA GEN CONSTRUCTION	22063 ROSARY AVE. NUEVO, CA 92567	951-385-9149	<a href="mailto:JPINEDAGC@GMAIL.COM">JPINEDAGC@GMAIL.COM</a>
BOB WALTERS JR CONST. INC. – BOB WALTERS	15000 7 <sup>TH</sup> ST#202A, VICTORVILLE, CA 92345	760-617-9798	<a href="mailto:BOB@BWJRCONSTINC.COM">BOB@BWJRCONSTINC.COM</a> <a href="mailto:ROBBIE@BWJRCONSTINC.COM">ROBBIE@BWJRCONSTINC.COM</a>
WOODY'S DEMOLITION	9243 8 <sup>TH</sup> AVE. HESPERIA, CA 92345	760-559-4567	<a href="mailto:WOODYSDEMO@MSN.COM">WOODYSDEMO@MSN.COM</a>
KNC CONSTRUCTION	12277 APPLE VALLEY RD. APPLE VALLEY, CA 92308	760-559-2537	<a href="mailto:KNCCONSTRUCTION@AOL.COM">KNCCONSTRUCTION@AOL.COM</a>
BRICKLEY ENVIRONMENTAL – CHRIS IBARRA	957 W RECCE ST. SAN BERNARDINO, CA	951-533-9599	<a href="mailto:CHRIS@BRICKLEYENV.COM">CHRIS@BRICKLEYENV.COM</a>
UNLIMITED ENVIRONMENTAL, WALTER MEJIA	9945 PIONEER BLVD. SANTA FE SPRINGS	562-981-6600	<a href="mailto:INFO@UEITEAM.COM">INFO@UEITEAM.COM</a>
NOLIMIT CONST. SERGIO DUARTE		909-749-4607	<a href="mailto:NOLIMIT.CONST@ICLOUD.COM">NOLIMIT.CONST@ICLOUD.COM</a>
BOWEN ENGINEERING, DANIEL BOWEN	4664 S. CEDAR FRESNO, CA 93725	559-233-7464	<a href="mailto:OFFICE@BOWENDEMO.COM">OFFICE@BOWENDEMO.COM</a>
RESOURCE ENVIRONMENTAL,	13100 ALONDRA BLVD CERRITOS, CA 90703	562-468-7000	<a href="mailto:BIDS@RESOURCE-ENV.COM">BIDS@RESOURCE-ENV.COM</a>
VERTEX CIVIL	2211 MICHELSON IRVINE, CA	714-390-9620	<a href="mailto:EMANUEL.SOLORIO@VERTEXCIVIL.COM">EMANUEL.SOLORIO@VERTEXCIVIL.COM</a>
DELTA 4 ENV, OSCAR SANCHEZ	11823 SLAUSON AVE.#22 SANTA FE SPRINGS, CA 90670	562-550-9278	<a href="mailto:ALFRED@DELTA4ENV.COM">ALFRED@DELTA4ENV.COM</a> <a href="mailto:OSCAR@DELTA4ENV.COM">OSCAR@DELTA4ENV.COM</a>

**Mandatory Pre-Bid Meeting**  
**AGENDA**

**BUILDING 321 INTERIOR DEMOLITION**  
**PROJECT CC25-043**

October 29, 2024, at 10:00 a.m.

***This is a mandatory meeting; a mandatory jobwalk will follow this meeting***

1. Welcome
2. Sign-In Sheets
3. Staff introductions
4. Bid-Related notes:
  - a. Documents required noted on Submission Certification (see other side)
  - b. Documents must have original signatures
  - c. Addenda must be acknowledged by signing and submitting only the cover page(s) from each Addendum
  - d. Subcontractor's List – City will require a request for subcontractor substitution and has to be approved prior to beginning for work.
5. Licenses
  - a. CSLB licenses: **Class B – General Building Contractor**
  - b. City of Victorville Business License – applies to prime and subs (after award)
6. State prevailing wage project. Senate Bill 854 applies – All contractors and subcontractors must be registered with DIR to bid on any public works projects.
7. Electronic Certified Payroll Reporting (eCPR) Contractors and subcontractors on all public works projects awarded must use this system to furnish certified payroll records to the Labor Commissioner. Contractors and subcontractors who have been submitting PDF copies of their certified payroll records for earlier projects must also begin using the new system. For more information go to [www.dir.ca.gov](http://www.dir.ca.gov) under Labor Law Public Works. City is also requesting copies of all certified payrolls and apprentice documents.
8. Following award, awarded contractor will need to provide:
  - a. Insurance certificates
  - b. Faithful Performance Bond and Payment Bond - 100% of the awarded contract amount – need only one original of each
  - c. Two original wet-signed Construction Agreements
  - d. Copies of payrolls
8. Last day of questions are due on **NOVEMBER 5, 2024, at 12:00 p.m.** Bids are due by **NOVEMBER 14, 2024 at 2:30 p.m. PST.** (Late bids will not be accepted). Mailed or delivered to City Hall, 14343 Civic Drive, 2<sup>nd</sup> Floor, Victorville, CA 92392. Emailed or faxed will not be accepted.
10. Mandatory jobwalk – during the job walk, please hold off on all your questions until after the meeting. Please email them all to Celeste Calderon at [cmcalderon@victorvilleca.gov](mailto:cmcalderon@victorvilleca.gov) in order to respond to your questions via addendum.

**SOUTHERN CALIFORNIA LOGISTICS AIRPORT AUTHORITY (SCLAA)  
CC25-043 BUILDING 321 INTERIOR DEMOLITION**

**SUBMISSION CERTIFICATION**

I hereby submit to the SCLAA the following Bid Proposal for work outlined in the Notice Inviting Bids and Instructions to Bidders (General Specifications); Required Bid Documents and Proposal Forms (as listed below); Contract, Bond and Guaranty Forms; General Provisions; Technical Specifications; Bid Addenda; and any other documents incorporated in any of the foregoing by reference, for **PROJECT #CC25-043 BUILDING 321 INTERIOR DEMOLITION** (hereinafter referred to in these Required Bid Documents and Proposal Forms as the "Contract Documents"). All of the following documents and forms (check below) are completed, fully executed, and included in my Bid Proposal as required in the Instructions to Bidders:

- \_\_\_\_\_ Bid Proposal
- \_\_\_\_\_ Bid Proposal Instructions
- \_\_\_\_\_ Bid Proposal Price Schedule
- \_\_\_\_\_ Bidder Identification
- \_\_\_\_\_ Customer References
- \_\_\_\_\_ Contractor's Qualifications Statement
- \_\_\_\_\_ PCC Section 10285.1 Statement
- \_\_\_\_\_ PCC Statement 10232
- \_\_\_\_\_ Worker's Compensation Certification
- \_\_\_\_\_ Signature Authorization
- \_\_\_\_\_ Subcontractor's List
- \_\_\_\_\_ Questionnaire
- \_\_\_\_\_ Bidder's Bond
- \_\_\_\_\_ Non-Collusion Declaration
- \_\_\_\_\_ Senate Bill 854 Certification
- \_\_\_\_\_ Debarred Certification Acknowledgement
- \_\_\_\_\_ Acknowledgement Pages for All Bid Addenda (if applicable)

My signature on this Submission Certification is affirmation that all items listed above are fully completed and executed and are hereby submitted attached hereto as required. I understand that failure to complete and/or submit any of the required documents may be cause for rejection of my Bid Proposal.

\_\_\_\_\_  
Authorized Signature

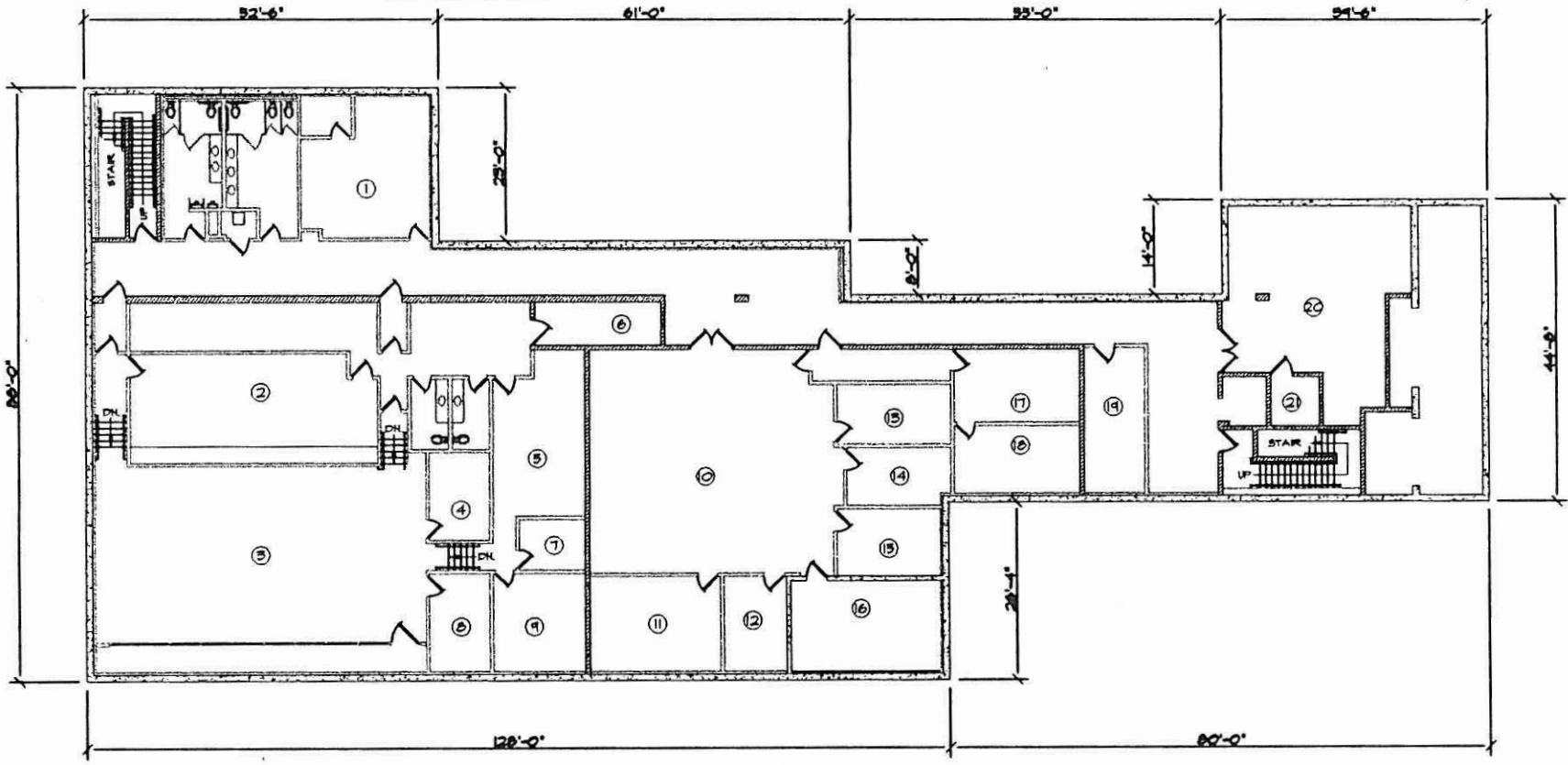
\_\_\_\_\_  
Printed Name and Title

\_\_\_\_\_  
Date Signed

\_\_\_\_\_  
Telephone Number

NOTES: 0

1	OFFICE SPACE 348.23φ	11	OFFICE SPACE 270.61φ	21	OFFICE SPACE 51.96φ
2	OFFICE SPACE 573.22φ	12	OFFICE SPACE 130.61φ		
3	OFFICE SPACE 1503.85φ	13	OFFICE SPACE 146.61φ		
4	OFFICE SPACE 117φ	14	OFFICE SPACE 131.07φ		
5	OFFICE SPACE 338.24φ	15	OFFICE SPACE 153.33φ		
6	OFFICE SPACE 118.75φ	16	OFFICE SPACE 295.56φ		
7	OFFICE SPACE 73.15φ	17	OFFICE SPACE 199.71φ		
8	OFFICE SPACE 130.3φ	18	OFFICE SPACE 187.38φ		
9	OFFICE SPACE 198.11φ	19	OFFICE SPACE 191.71φ		
10	OFFICE SPACE 1202.26φ	20	MECH. ROOM 692.11φ		



## BUILDING 321 BASEMENT FLOOR PLAN

1:374.3 OVER ALL 50. FT.

SCALE 1/8" = 1'-0"

CITY OF VICTORVILLE  
BUILDING AND SAFETY DEPARTMENT  
1600 GRAND DRIVE, VICTORVILLE, CA 92083

THIS DRAWING IS THE PROPERTY OF THE CITY OF VICTORVILLE. IT IS TO BE USED ONLY FOR THE PROJECT AND SITE SPECIFICALLY IDENTIFIED HEREON. IT IS NOT TO BE REPRODUCED, COPIED, OR TRANSMITTED IN ANY FORM OR BY ANY MEANS, ELECTRONIC OR MECHANICAL, INCLUDING PHOTOCOPYING, RECORDING, OR BY ANY INFORMATION STORAGE AND RETRIEVAL SYSTEM, WITHOUT THE WRITTEN PERMISSION OF THE CITY OF VICTORVILLE.

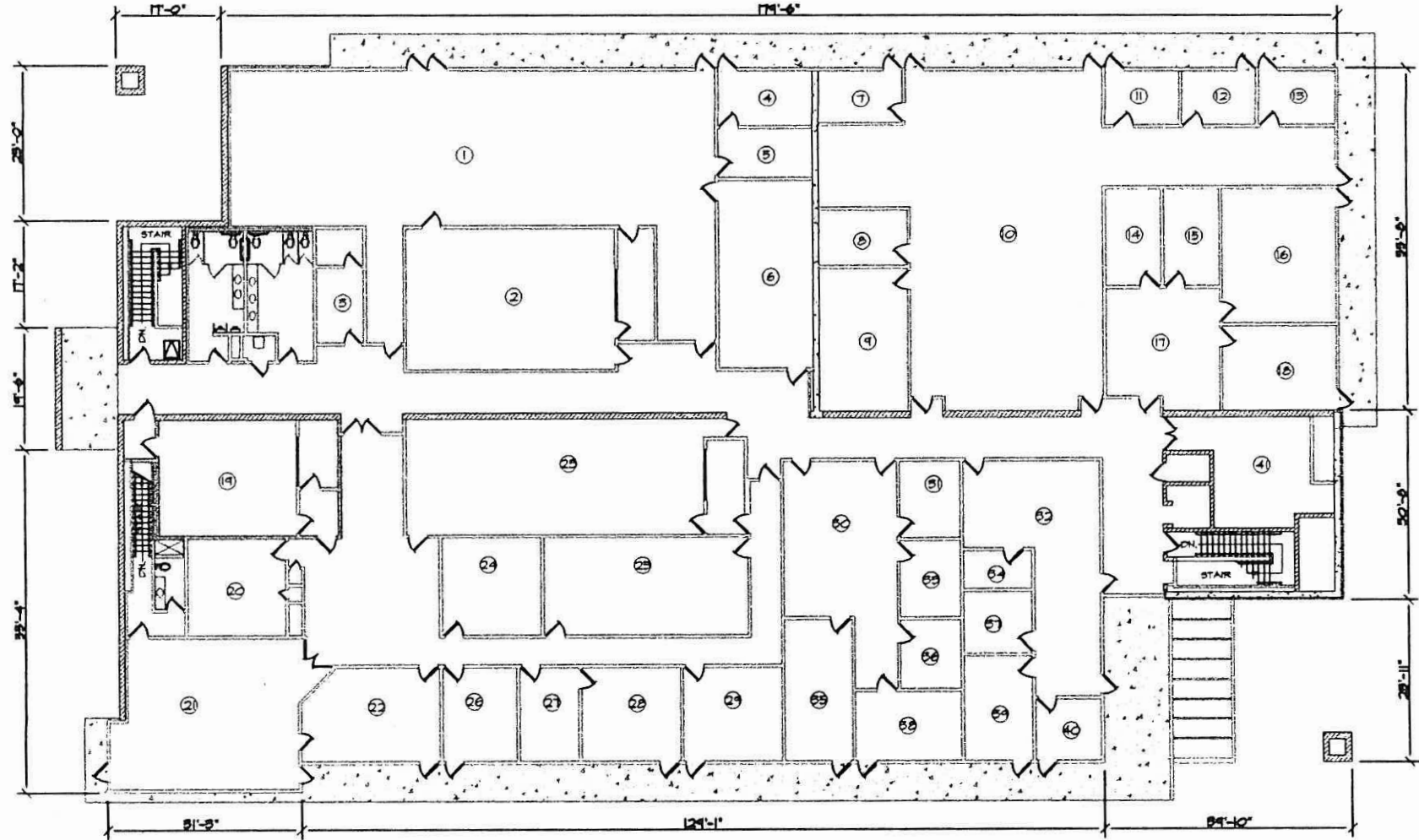
TENANT IMPROVEMENTS FOR  
SOUTHERN CALIFORNIA INTERNATIONAL AIRPORT  
BUILDING 321 BASEMENT FLOOR PLAN

DESIGNED BY	DATE	REVISION
DRAWN BY		
CHECKED BY		
APPROVED BY		

DATE	12-20-08
SCALE	AS SHOWN
DESIGNER	R. HARTSH
CHECKER	
PROJECT	321 BASE
SHEET NO.	2
TOTAL SHEETS	10

NOTES: O

1	OFFICE SPACE 2302.89φ	11	OFFICE SPACE 99.91φ	21	OFFICE SPACE 736.81φ	31	OFFICE SPACE 119.27φ	41	MECH. ROOM 333.61φ
2	OFFICE SPACE 755.65φ	12	OFFICE SPACE 103.29φ	22	OFFICE SPACE 317.06φ	32	OFFICE SPACE 336.17φ		
3	OFFICE SPACE 89.61φ	13	OFFICE SPACE 108.83φ	23	OFFICE SPACE 900.85φ	33	OFFICE SPACE 119.22φ		
4	OFFICE SPACE 134.8φ	14	OFFICE SPACE 138.92φ	24	OFFICE SPACE 250.2φ	34	OFFICE SPACE 67.52φ		
5	OFFICE SPACE 118.8φ	15	OFFICE SPACE 136.92φ	25	OFFICE SPACE 518.65φ	35	OFFICE SPACE 243.97φ		
6	OFFICE SPACE 456.26φ	16	OFFICE SPACE 388.92φ	26	OFFICE SPACE 177φ	36	OFFICE SPACE 103.33φ		
7	OFFICE SPACE 112.57φ	17	OFFICE SPACE 353.81φ	27	OFFICE SPACE 142.1φ	37	OFFICE SPACE 107.35φ		
8	OFFICE SPACE 125.14φ	18	OFFICE SPACE 250.3φ	28	OFFICE SPACE 236.84φ	38	OFFICE SPACE 181.33φ		
9	OFFICE SPACE 324.65φ	19	OFFICE SPACE 403.85φ	29	OFFICE SPACE 236.84φ	39	OFFICE SPACE 181.49φ		
10	OFFICE SPACE 2187.49φ	20	OFFICE SPACE 246.73φ	30	OFFICE SPACE 333.89φ	40	OFFICE SPACE 102.81φ		



**BUILDING 321 SECOND FLOOR PLAN**  
 14,788.24 OVER ALL SQ. FT. SCALE 1/8" = 1'-0"

CITY OF VICTORVILLE  
 BUILDING AND SAFETY DEPARTMENT  
 1400 CIVIC CENTER, VICTORVILLE, CA 92080

THIS DRAWING IS THE PROPERTY OF THE CITY OF VICTORVILLE. IT IS TO BE USED ONLY FOR THE PROJECT AND SITE SPECIFICALLY IDENTIFIED HEREON. IT IS NOT TO BE REPRODUCED, COPIED, OR TRANSMITTED IN ANY FORM OR BY ANY MEANS, ELECTRONIC OR MECHANICAL, INCLUDING PHOTOCOPYING, RECORDING, OR BY ANY INFORMATION STORAGE AND RETRIEVAL SYSTEM, WITHOUT THE WRITTEN PERMISSION OF THE CITY OF VICTORVILLE.

TENANT IMPROVEMENTS FOR  
 SOUTHERN CALIFORNIA INTERNATIONAL AIRPORT  
 BUILDING 321 SECOND FLOOR PLAN

DATE APPROVAL	DATE	ISSUES

DATE	BY	REVISION

4



NOTES: O

1 OFFICE SPACE 175.42¢	11 OFFICE SPACE 592.46¢	21 OFFICE SPACE 575.94¢	31 OFFICE SPACE 122.22¢	41 OFFICE SPACE 1126.25¢
2 OFFICE SPACE 173.46¢	12 OFFICE SPACE 112.35¢	22 OFFICE SPACE 426.3¢	32 OFFICE SPACE 186.68¢	42 OFFICE SPACE 66.06¢
3 OFFICE SPACE 227.15¢	13 OFFICE SPACE 115.21¢	23 OFFICE SPACE 98.48¢	33 OFFICE SPACE 294.25¢	43 OFFICE SPACE 206.94¢
4 OFFICE SPACE 344.15¢	14 OFFICE SPACE 125.54¢	24 OFFICE SPACE 45.56¢	34 OFFICE SPACE 103.11¢	44 OFFICE SPACE 116.01¢
5 OFFICE SPACE 214.5¢	15 OFFICE SPACE 609.1¢	25 OFFICE SPACE 41.68¢	35 OFFICE SPACE 591.88¢	45 OFFICE SPACE 501.31¢
6 OFFICE SPACE 2117.7¢	16 MECH. ROOM 333.39¢	26 OFFICE SPACE 99.56¢	36 OFFICE SPACE 144.22¢	
7 OFFICE SPACE 129.9¢	17 OFFICE SPACE 192.48¢	27 OFFICE SPACE 41.68¢	37 OFFICE SPACE 103.11¢	
8 OFFICE SPACE 142.58¢	18 OFFICE SPACE 667.34¢	28 OFFICE SPACE 143.25¢	38 OFFICE SPACE 144.22¢	
9 OFFICE SPACE 443.38¢	19 OFFICE SPACE 259.65¢	29 OFFICE SPACE 116.19¢	39 OFFICE SPACE 102.83¢	
10 OFFICE SPACE 1194.28¢	20 OFFICE SPACE 74.82¢	30 OFFICE SPACE 91¢	40 OFFICE SPACE 145.41¢	



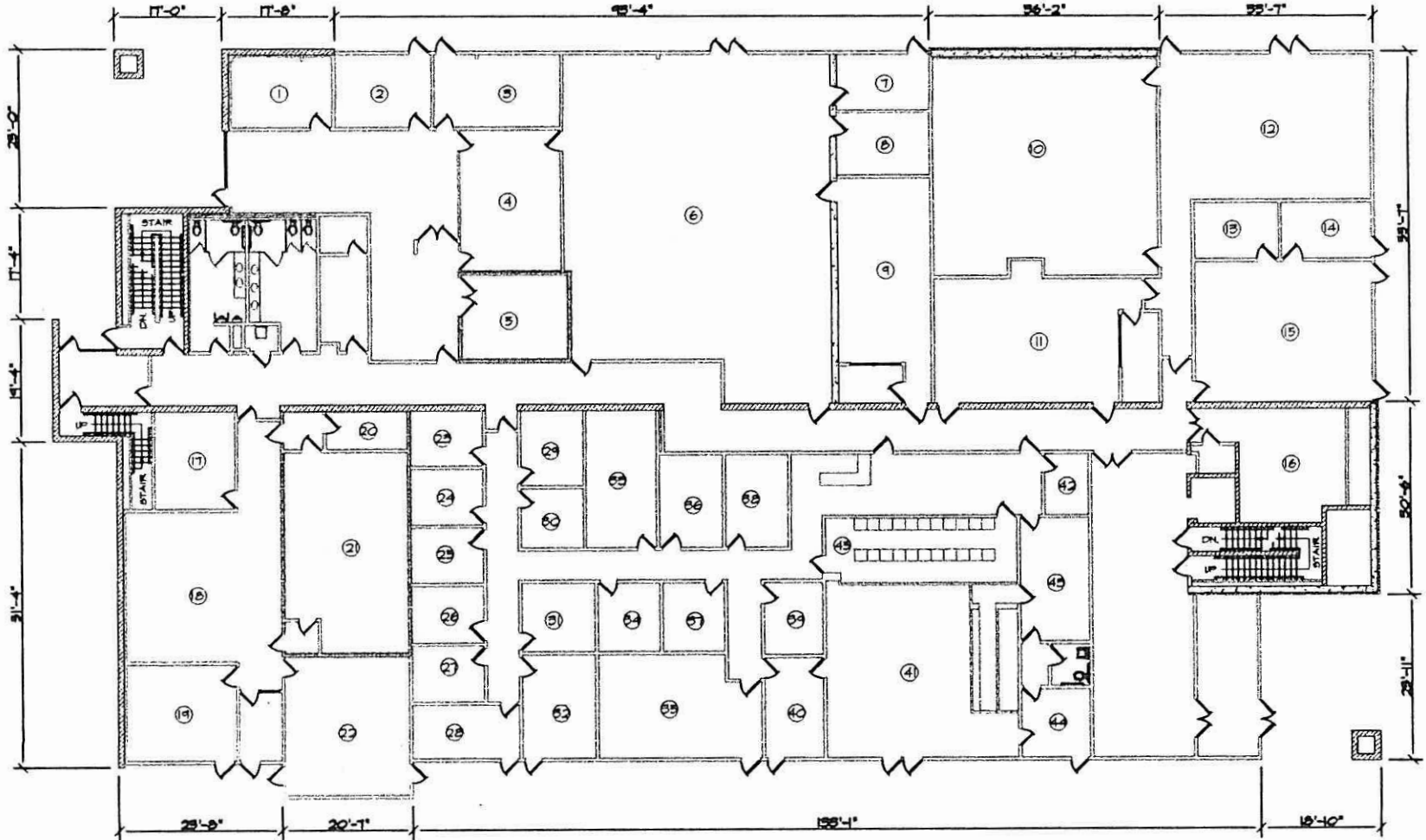
CITY OF VICTORVILLE  
BUILDING AND SAFETY DEPARTMENT  
1000 JANE LANE, VICTORVILLE, CA 92083

THIS DOCUMENT IS THE PROPERTY OF THE CITY OF VICTORVILLE. IT IS TO BE USED ONLY FOR THE PROJECT AND SITE SPECIFICALLY IDENTIFIED HEREON. IT IS NOT TO BE REPRODUCED, COPIED, OR TRANSMITTED IN ANY FORM OR BY ANY MEANS, ELECTRONIC OR MECHANICAL, INCLUDING PHOTOCOPYING, RECORDING, OR BY ANY INFORMATION STORAGE AND RETRIEVAL SYSTEM, WITHOUT THE WRITTEN PERMISSION OF THE CITY OF VICTORVILLE.

TENANT IMPROVEMENTS FOR  
SOUTHERN CALIFORNIA INTERNATIONAL AIRPORT  
BUILDING 321 FIRST FLOOR PLAN

DATE	DESCRIPTION

1  
2  
3  
4  
5  
6  
7  
8  
9  
10  
11  
12  
13  
14  
15  
16  
17  
18  
19  
20  
21  
22  
23  
24  
25  
26  
27  
28  
29  
30  
31  
32  
33  
34  
35  
36  
37  
38  
39  
40  
41  
42  
43  
44  
45



BUILDING 321 FIRST FLOOR PLAN

20,251.00 OVER ALL 80. FT. SCALE 1/8" = 1'-0"

## ASBESTOS ASSESSMENT REPORT

Facility Number: 321

Facility Description: Wing HQ

Facility Number 321 is approximately 56,650 square feet. This facility was constructed in 1987.

### Exterior Components:

The exterior walls of this facility are constructed of concrete masonry units, with aluminum window frames. This facility has a flat roof covered with mineralized roll roofing. Tar roof mastic is located on roof penetrations. Stucco is applied to the exterior overhangs.

### Interior Components:

This facility has a concrete slab covered with 12-inch floor tiles/mastic. The interior partition walls are drywall/tape/compound, with base cove/mastic along the bottom. Interior ceilings are a combination of drywall/tape/compound, glued-on spline ceiling tiles, and 2'x 4' lay-in ceiling tiles.

### Previous Survey/Sample Data:

No previous bulk survey or sampling data were available for Facility #321.

### Findings:

1. Two friable suspect asbestos-containing material were identified: (1) glued-on spline ceiling tiles, and (2) 2'x 4' lay-in ceiling tiles.
  - a. Three bulk samples of the glued-on spline ceiling tiles were obtained. Laboratory analysis indicated no detectable level of asbestos present.
  - b. Three bulk samples of 2'x 4' lay-in ceiling tiles were obtained. Laboratory analysis indicated no detectable level of asbestos present.
2. Six non-friable suspect asbestos-containing materials were identified: (1) tar roof mastic, (2) mineralized roll roofing, (3) exterior stucco, (4) drywall/tape/compound, (5) base cove/mastic, and (6) 12-inch floor tiles/mastic. All non-friable suspect materials were assumed to contain asbestos with the following exception:
  - a. Seven bulk samples of the exterior stucco were obtained. Laboratory analysis indicated no detectable level of asbestos present.

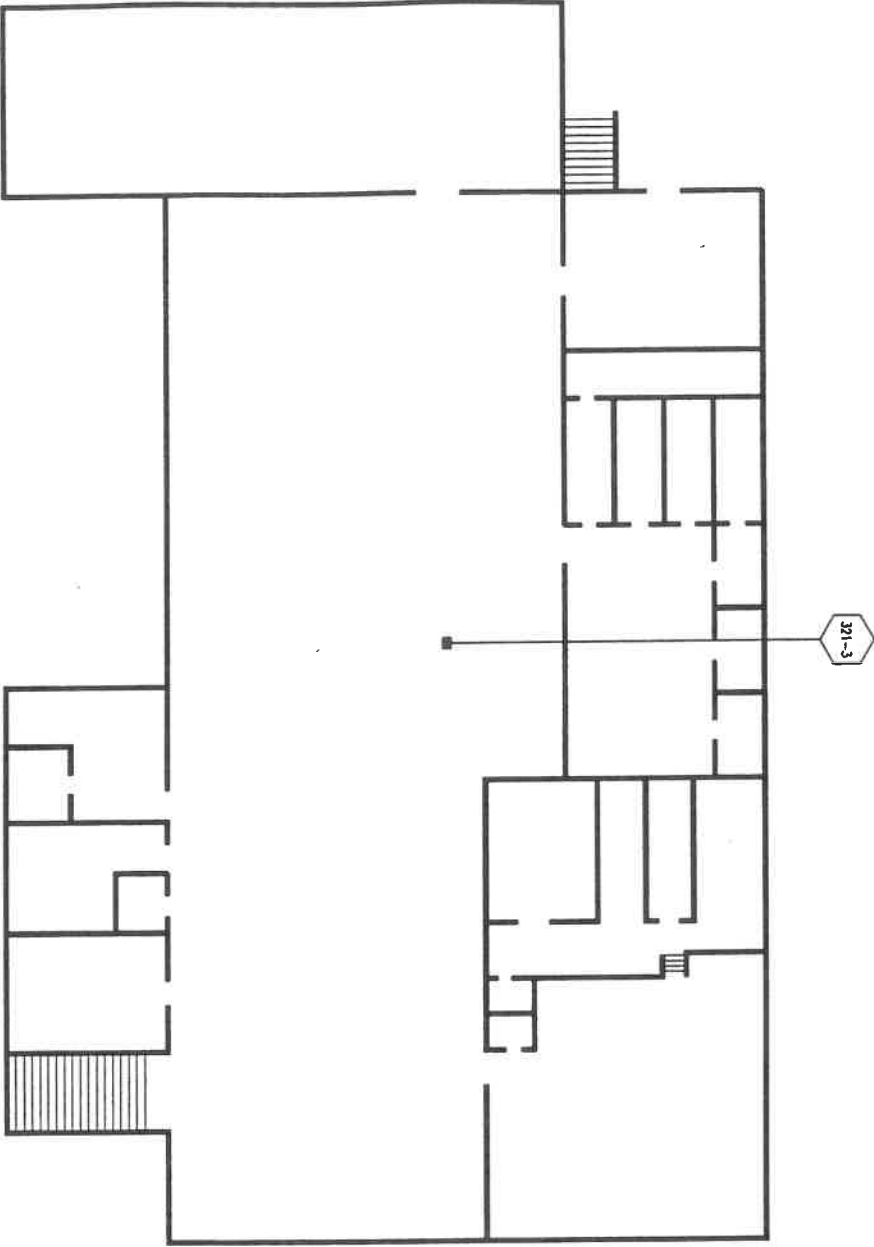
The following Confirmed/Assumed Asbestos-Containing Material Inventory (Table 2) lists the material type, general location, sample number, percent asbestos, friability, and quantity. Materials which were assumed, not sampled, or not quantified are so indicated on the table. Materials which were bulk sampled and for which laboratory analysis revealed no detectable level of asbestos present have been included on the table for reference purposes only.

Abbreviations:

NQ	Not Quantified
N/A	Not Applicable
SF	Square Feet
LF	Linear Feet
Jts	Joints
A/W	Associated With
Fbgl	Fiberglass
PI	Pipe Insulation
ND	No Damage
SBB	Sampled By Base

TABLE 2 - Confirmed/Assumed Asbestos-Containing Material Inventory

MATERIAL DESCRIPTION	LOCATION	SAMPLE NUMBER	PERCENT ASBESTOS	FRIABLE	QUANTITY	DAMAGE
Composition Roofing	Roof	Not Sampled	Assumed	No	NO	ND
Tar Roof Mastic	Roof	Not Sampled	Assumed	No	NO	ND
Exterior Stucco	Overhangs	321-7,8,9, 10,11,12,13	None Detected	No	N/A	N/A
Drywall/Tape/Compound	Interior Walls and Ceilings	Not Sampled	Assumed	No	NO	ND
12-inch Floor Tiles/Mastic	Interior Floor	Not Sampled	Assumed	No	NO	ND
Base Cove/Mastic	Interior Walls	Not Sampled	Assumed	No	NO	ND
Glued-in Spline Ceiling Tiles	Interior Ceilings	321-01,02,03	None Detected	No	N/A	N/A
2'x 4' Lay-in Ceiling Tiles	Interior Ceilings	321-04,05,06	None Detected	Yes	N/A	N/A



EXISTING BASEMENT FLOOR PLAN

LEGEND

321-3 SAMPLE LOCATION



NORTH

ASBESTOS MATERIAL INVENTORY

MATERIAL TYPE	ASBESTOS CONTENT	FRIABLE
Composition Roofing	Assumed	No
Tar Roof Mastic	Assumed	No
Drywall/Topo/Compound	Assumed	No
12-inch Floor Tiles/Mastic	Assumed	No
Base Cove/Mastic	Assumed	No

**GAFEB**

GEORGE AIR FORCE BASE  
CALIFORNIA

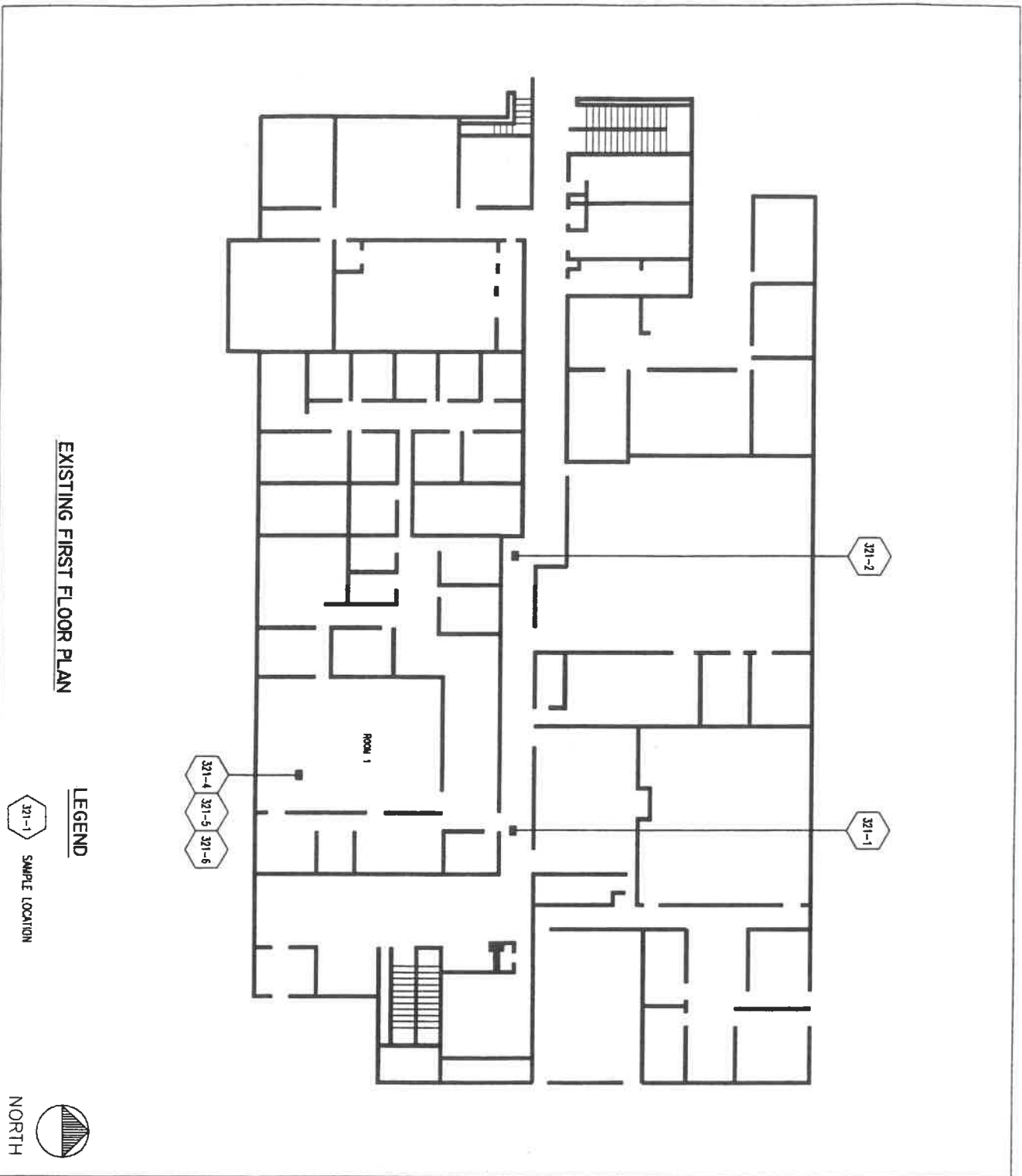
BUILDING #321

EARTHTECH

150 Sand Building Suite 3000 Long Beach, California 90803-4443

PROJECT NO.	REV.	DATE	REVISION	REVISION NO.
04-80330				
DRAWN BY:				
R. HORTON				
APPROVED:				
L. JENSON				
SCALE:				
NOT TO SCALE				
DATE:				
12-28-84				

A-1



EXISTING FIRST FLOOR PLAN

LEGEND

321-1 SAMPLE LOCATION



ASBESTOS MATERIAL INVENTORY		
MATERIAL TYPE	ASBESTOS CONTENT	FRAGILE
Composition Roofing	Assumed	No
Tar Roof Mastic	Assumed	No
Drywall/Tape/Compound	Assumed	No
12-inch Roof Tiles/Mastic	Assumed	No
Base Cov./Mastic	Assumed	No

# GAFB

GEORGE AIR FORCE BASE  
CALIFORNIA

PROJECT: BUILDING #321

---

EARTHTECH

---

PROJECT NO.	REV.	DATE	REVISION	DESIGNER	REVISION NO.
44-8030	1			R. HORTON	
				APPROVER: L. JENSEN	
				SCALE: NOT TO SCALE	
				DATE: 12-28-84	

SHEET NO. **A-2**

100 West Broadway Suite 8000 Long Beach, California 90802-4443



**Bulk Asbestos Analysis Summary**  
40 CFR 763, Subpart F, Appendix A (AHERA)

Client:

The Earth Technology Corporation  
Asbestos and Air Quality Division  
100 W. Broadway, Suite 5000  
Long Beach, CA 90802-4443

Client ID: 5115  
Report Number: 223462  
Date Received: 10/25/94

P.O. Num: 94S-0005-LB2  
Job ID: 94S-0055-DC4/94-9030-05  
Site: George AFB - 321, Wing Hqs.

Sample Number Location/Description	Date Col.	Lab Num.	Asbestos Present	(Breakdown by type)
321-01 2nd Floor, hallway, 12" fissured ACT.	10/18/94	19485493	Non-Det. %	
321-02 1st Floor, hallway, 12" fissured ACT.	10/18/94	19485494	Non-Det. %	
321-03 Basement hallway, 12" fissured ACT.	10/18/94	19485495	Non-Det. %	
321-04 Room 1, 2x4 fissured ACT.	10/18/94	19485496	Non-Det. %	
321-05 Room 2, 2x4 fissured ACT.	10/18/94	19485497	Non-Det. %	
321-06 Room 3, 2x4 fissured ACT.	10/18/94	19485498	Non-Det. %	

Patrick E. Little, Optical Laboratory Supervisor, Hayward Laboratory

Analytical results and reports are generated by Forensic analytical at the request of and for the exclusive use of the person or entity (client) named on such report. Results, reports or copies of same will not be released by Forensic Analytical to any third party without prior written request from client. This report applies only to the sample(s) tested. Supporting laboratory documentation is available upon request. This report must not be reproduced except in full with approval from Forensic Analytical. The client is solely responsible for the use and interpretation of test results and reports requested from Forensic Analytical. This report must not be used by the client to claim product endorsement by NVLAP or any agency of the U.S. Government. Forensic Analytical is not able to assess the degree of hazard resulting from materials analyzed. Samples submitted to Forensic Analytical are retained for a period of six months are then disposed of according to all state and federal guidelines.



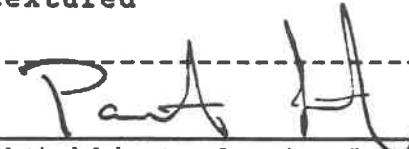
**Bulk Asbestos Analysis Summary**  
40 CFR 763, Subpart F, Appendix A (AHERA)

Client:  
The Earth Technology Corporation  
Asbestos and Air Quality Division  
100 W. Broadway, Suite 5000  
Long Beach, CA 90802-4443

Client ID: 5115  
Report Number: 226543  
Date Received: 12/16/94

-----  
P.O. Num: 94S-0005-LB2  
Job ID: 94S-0055-DC4/94-9030-05  
Site: George AFB - Building 321, Offices

Sample Number	Date Col.	Lab Num.	Asbestos Present	(Breakdown by type)
Location/Description				
321-7	12/15/94	29402089	Non-Det. %	
Overhang, north corner, textured stucco.				
321-8	12/15/94	29402090	Non-Det. %	
Overhang, south corner, textured stucco.				
321-9	12/15/94	29402091	Non-Det. %	
Overhang, west corner, textured stucco.				
321-10	12/15/94	29402092	Non-Det. %	
Overhang, east corner, textured stucco.				
321-11	12/15/94	29402093	Non-Det. %	
Overhang, middle south, textured stucco.				
321-12	12/15/94	29402094	Non-Det. %	
Overhang, middle west, textured stucco.				
321-13	12/15/94	29402095	Non-Det. %	
Overhang, middle north, textured stucco.				

-----  
  
-----  
Patrick E. Little, Optical Laboratory Supervisor, Hayward Laboratory

Analytical results and reports are generated by Forensic Analytical at the request of and for the exclusive use of the person or entity (client) named on such report. Results, reports or copies of same will not be released by Forensic Analytical to any third party without prior written request from client. This report applies only to the sample(s) tested. Supporting laboratory documentation is available upon request. This report must not be reproduced except in full with approval from Forensic Analytical. The client is solely responsible for the use and interpretation of test results and reports requested from Forensic Analytical. This report must not be used by the client to claim product endorsement by NVLAP or any agency of the U.S. Government. Forensic Analytical is not able to assess the degree of hazard resulting from materials analyzed. Samples submitted to Forensic Analytical are retained for a period of six months and then disposed of according to all state and federal guidelines.





**Forensic Analytical**  
Analytical Report

San Francisco • 3777 Depot Road, Suite 409, Hayward, CA 94545 • Phone 510/887-8828 • Fax 510/887-4218  
Los Angeles • 19443 Laurel Park Road, Suite 101, Rancho Dominguez, CA, 90220 • Phone 310/763-2374 • Fax 310/763-8684

**Bulk Material Analysis**

Method: 40 CFR 763, Subpart F, Appendix A (AHERA)

**Client:**

The Earth Technology Corporation  
Asbestos and Air Quality Division  
100 W. Broadway, Suite 5000  
Long Beach, CA 90802-4443

Client Number: 5115  
Report Number: 223462  
Date Received: 10/25/94

-----  
Lab Number: 19485493  
Sample Number: 321-01  
P.O. Num: 94S-0005-LB2  
Job ID: 94S-0055-DC4/94-9030-05  
Site: George AFB - 321, Wing Hqs.

Date Collected: 10/18/94

Location: 2nd Floor, hallway, 12" fissured ACT.

Gross Description: Off-white fibrous material with paint.

**Comments:**

**Microscopic Description**

**TOTAL ASBESTOS PRESENT:**

Chrysotile  
Amosite

Non-Det. %  
Non-Det. %  
%  
%

Non-Det. %

**TOTAL NON-ASBESTOS FIBROUS MATERIAL PRESENT:**

Cellulose  
Fibrous Glass

20-25 %  
40-45 %  
%  
%

65-70 %

**TOTAL NON-ASBESTOS NONFIBROUS MATERIAL PRESENT:**

30-35 %

-----  
Analytical results and reports are generated by Forensic analytical at the request of and for the exclusive use of the person or entity (client) named on such report. Results, reports or copies of same will not be released by Forensic Analytical to any third party without prior written request from client. This report applies only to the sample(s) tested. Supporting laboratory documentation is available upon request. This report must not be reproduced except in full with approval from Forensic Analytical. The client is solely responsible for the use and interpretation of test results and reports requested from Forensic Analytical. This report must not be used by the client to claim product endorsement by NVLAP or any agency of the U.S. Government. Forensic Analytical is not able to assess the degree of hazard resulting from materials analyzed. Samples submitted to Forensic Analytical are retained for a period of six months and are then disposed of according to all state and federal guidelines.



**Forensic Analytical**  
Analytical Report

San Francisco • 3777 Depot Road, Suite 409, Hayward, CA 94545 • Phone 510/887-8828 • Fax 510/887-4218  
Los Angeles • 19443 Laurel Park Road, Suite 101, Rancho Dominguez, CA, 90220 • Phone 310/763-2374 • Fax 310/763-8684

**Bulk Material Analysis**

Method: 40 CFR 763, Subpart F, Appendix A (AHERA)

Client:

The Earth Technology Corporation  
Asbestos and Air Quality Division  
100 W. Broadway, Suite 5000  
Long Beach, CA 90802-4443

Client Number: 5115  
Report Number: 223462  
Date Received: 10/25/94

-----  
Lab Number: 19485494  
Sample Number: 321-02  
P.O. Num: 94S-0005-LB2  
Job ID: 94S-0055-DC4/94-9030-05  
Site: George AFB - 321, Wing Hqs.

Date Collected: 10/18/94

Location: 1st Floor, hallway, 12" fissured ACT.

Gross Description: Off-white fibrous material with paint.

Comments:

Microscopic Description

TOTAL ASBESTOS PRESENT:

Chrysotile  
Amosite

Non-Det. %  
Non-Det. %  
%  
%

Non-Det. %

TOTAL NON-ASBESTOS FIBROUS MATERIAL PRESENT:

Cellulose  
Fibrous Glass

20-25 %  
40-45 %  
%  
%

65-70 %

TOTAL NON-ASBESTOS NONFIBROUS MATERIAL PRESENT:

30-35 %

-----  
Analytical results and reports are generated by Forensic analytical at the request of and for the exclusive use of the person or entity (client) named on such report. Results, reports or copies of same will not be released by Forensic Analytical to any third party without prior written request from client. This report applies only to the sample(s) tested. Supporting laboratory documentation is available upon request. This report must not be reproduced except in full with approval from Forensic Analytical. The client is solely responsible for the use and interpretation of test results and reports requested from Forensic Analytical. This report must not be used by the client to claim product endorsement by NVLAP or any agency of the U.S. Government. Forensic Analytical is not able to assess the degree of hazard resulting from materials analyzed. Samples submitted to Forensic Analytical are retained for a period of six months are then disposed of according to all state and federal guidelines.



**Forensic Analytical**  
Analytical Report

San Francisco • 3777 Depot Road, Suite 409, Hayward, CA 94545 • Phone 510/887-8828 • Fax 510/887-4218  
Los Angeles • 19443 Laurel Park Road, Suite 101, Rancho Dominguez, CA, 90220 • Phone 310/763-2374 • Fax 310/763-868

**Bulk Material Analysis**  
Method: 40 CFR 763, Subpart F, Appendix A (AHERA)

**Client:**

The Earth Technology Corporation  
Asbestos and Air Quality Division  
100 W. Broadway, Suite 5000  
Long Beach, CA 90802-4443

Client Number: 5115  
Report Number: 223462  
Date Received: 10/25/94

-----  
Lab Number: 19485495  
Sample Number: 321-03  
P.O. Num: 94S-0005-LB2  
Job ID: 94S-0055-DC4/94-9030-05  
Site: George AFB - 321, Wing Hqs.

Date Collected: 10/18/94

Location: Basement hallway, 12" fissured ACT.

Gross Description: Off-white fibrous material with paint.

**Comments:**

**Microscopic Description**

<b>TOTAL ASBESTOS PRESENT:</b>		<b>Non-Det. %</b>	<b>Non-Det. %</b>
Chrysotile		Non-Det. %	
Amosite		Non-Det. %	
		%	
		%	
<b>TOTAL NON-ASBESTOS FIBROUS MATERIAL PRESENT:</b>			<b>65-70 %</b>
Cellulose	20-25	%	
Fibrous Glass	40-45	%	
		%	
		%	
<b>TOTAL NON-ASBESTOS NONFIBROUS MATERIAL PRESENT:</b>			<b>30-35 %</b>

-----  
Analytical results and reports are generated by Forensic Analytical at the request of and for the exclusive use of the person or entity (client) named on such report. Results, reports or copies of same will not be released by Forensic Analytical to any third party without prior written request from client. This report applies only to the sample(s) tested. Supporting laboratory documentation is available upon request. This report must not be reproduced except in full with approval from Forensic Analytical. The client is solely responsible for the use and interpretation of test results and reports requested from Forensic Analytical. This report must not be used by the client to claim product endorsement by NVLAP or any agency of the U.S. Government. Forensic Analytical is not able to assess the degree of hazard resulting from materials analyzed. Samples submitted to Forensic Analytical are retained for a period of six months and then disposed of according to all state and federal guidelines.



**Forensic Analytical**  
Analytical Report

San Francisco • 3777 Depot Road, Suite 409, Hayward, CA 94545 • Phone 510/887-8828 • Fax 510/887-4218  
Los Angeles • 19443 Laurel Park Road, Suite 101, Rancho Dominguez, CA, 90220 • Phone 310/763-2374 • Fax 310/763-8684

**Bulk Material Analysis**

Method: 40 CFR 763, Subpart F, Appendix A (AHERA)

Client:

The Earth Technology Corporation  
Asbestos and Air Quality Division  
100 W. Broadway, Suite 5000  
Long Beach, CA 90802-4443

Client Number: 5115  
Report Number: 223462  
Date Received: 10/25/94

-----  
Lab Number: 19485496  
Sample Number: 321-04  
P.O. Num: 94S-0005-LB2  
Job ID: 94S-0055-DC4/94-9030-05  
Site: George AFB - 321, Wing Hqs.

Date Collected: 10/18/94

Location: Room 1, 2x4 fissured ACT.

Gross Description: Off-white fibrous material with paint.

Comments:

Microscopic Description

TOTAL ASBESTOS PRESENT:			Non-Det. %
Chrysotile		Non-Det. %	
Amosite		Non-Det. %	
		%	
		%	
TOTAL NON-ASBESTOS FIBROUS MATERIAL PRESENT:			65-70 %
Cellulose	30-35	%	
Fibrous Glass	30-35	%	
		%	
		%	
TOTAL NON-ASBESTOS NONFIBROUS MATERIAL PRESENT:			30-35 %

-----  
Analytical results and reports are generated by Forensic analytical at the request of and for the exclusive use of the person or entity (client) named on such report. Results, reports or copies of same will not be released by Forensic Analytical to any third party without prior written request from client. This report applies only to the sample(s) tested. Supporting laboratory documentation is available upon request. This report must not be reproduced except in full with approval from Forensic Analytical. The client is solely responsible for the use and interpretation of test results and reports requested from Forensic Analytical. This report must not be used by the client to claim product endorsement by NVLAP or any agency of the U.S. Government. Forensic Analytical is not able to assess the degree of hazard resulting from materials analyzed. Samples submitted to Forensic Analytical are retained for a period of six months and then disposed of according to all state and federal guidelines.



**Forensic Analytical**  
Analytical Report

San Francisco • 3777 Depot Road, Suite 409, Hayward, CA 94545 • Phone 510/887-8828 • Fax 510/887-4218  
Los Angeles • 19443 Laurel Park Road, Suite 101, Rancho Dominguez, CA, 90220 • Phone 310/763-2374 • Fax 310/763-8684

**Bulk Material Analysis**

Method: 40 CFR 763, Subpart F, Appendix A (AHERA)

Client:

The Earth Technology Corporation  
Asbestos and Air Quality Division  
100 W. Broadway, Suite 5000  
Long Beach, CA 90802-4443

Client Number: 5115  
Report Number: 223462  
Date Received: 10/25/94

-----  
Lab Number: 19485497  
Sample Number: 321-05  
P.O. Num: 94S-0005-LB2  
Job ID: 94S-0055-DC4/94-9030-05  
Site: George AFB - 321, Wing Hqs.

Date Collected: 10/18/94

Location: Room 2, 2x4 fissured ACT.

Gross Description: Off-white fibrous material with paint.

Comments:

Microscopic Description

TOTAL ASBESTOS PRESENT:			Non-Det. %
Chrysotile		Non-Det. %	
Amosite		%	
		%	
TOTAL NON-ASBESTOS FIBROUS MATERIAL PRESENT:			65-70 %
Cellulose	30-35	%	
Fibrous Glass	30-35	%	
		%	
		%	
TOTAL NON-ASBESTOS NONFIBROUS MATERIAL PRESENT:			30-35 %

-----  
Analytical results and reports are generated by Forensic analytical at the request of and for the exclusive use of the person or entity (client) named on such report. Results, reports or copies of same will not be released by Forensic Analytical to any third party without prior written request from client. This report applies only to the sample(s) tested. Supporting laboratory documentation is available upon request. This report must not be reproduced except in full with approval from Forensic Analytical. The client is solely responsible for the use and interpretation of test results and reports requested from Forensic Analytical. This report must not be used by the client to claim product endorsement by NVLAP or any agency of the U.S. Government. Forensic Analytical is not able to assess the degree of hazard resulting from materials analyzed. Samples submitted to Forensic Analytical are retained for a period of six months and then disposed of according to all state and federal guidelines.



**Forensic Analytical**  
Analytical Report

San Francisco • 3777 Depot Road, Suite 409, Hayward, CA 94545 • Phone 510/887-8828 • Fax 510/887-4218  
Los Angeles • 19443 Laurel Park Road, Suite 101, Rancho Dominguez, CA, 90220 • Phone 310/763-2374 • Fax 310/763-8684

**Bulk Material Analysis**

Method: 40 CFR 763, Subpart F, Appendix A (AHERA)

Client:

The Earth Technology Corporation  
Asbestos and Air Quality Division  
100 W. Broadway, Suite 5000  
Long Beach, CA 90802-4443

Client Number: 5115  
Report Number: 223462  
Date Received: 10/25/94

-----  
Lab Number: 19485498  
Sample Number: 321-06  
P.O. Num: 94S-0005-LB2  
Job ID: 94S-0055-DC4/94-9030-05  
Site: George AFB - 321, Wing Hqs.

Date Collected: 10/18/94

Location: Room 3, 2x4 fissured ACT.

Gross Description: Off-white fibrous material with paint.

Comments:

Microscopic Description

TOTAL ASBESTOS PRESENT:			Non-Det. %
Chrysotile		Non-Det. %	
Amosite		Non-Det. %	
		%	
		%	
TOTAL NON-ASBESTOS FIBROUS MATERIAL PRESENT:			65-70 %
Cellulose	30-35	%	
Fibrous Glass	30-35	%	
		%	
		%	
TOTAL NON-ASBESTOS NONFIBROUS MATERIAL PRESENT:			30-35 %

-----  
Analytical results and reports are generated by Forensic analytical at the request of and for the exclusive use of the person or entity (client) named on such report. Results, reports or copies of same will not be released by Forensic Analytical to any third party without prior written request from client. This report applies only to the sample(s) tested. Supporting laboratory documentation is available upon request. This report must not be reproduced except in full with approval from Forensic Analytical. The client is solely responsible for the use and interpretation of test results and reports requested from Forensic Analytical. This report must not be used by the client to claim product endorsement by NVLAP or any agency of the U.S. Government. Forensic Analytical is not able to assess the degree of hazard resulting from materials analyzed. Samples submitted to Forensic Analytical are retained for a period of six months and then disposed of according to all state and federal guidelines.



**Forensic Analytical**  
Analytical Report

San Francisco • 3777 Depot Road, Suite 409, Hayward, CA 94545 • Phone 510/887-8828 • Fax 510/887-4218  
Los Angeles • 19443 Laurel Park Road, Suite 101, Rancho Dominguez, CA, 90220 • Phone 310/763-2374 • Fax 310/763-861

**Bulk Material Analysis**  
Method: 40 CFR 763, Subpart F, Appendix A (AHERA)

**Client:**

The Earth Technology Corporation  
Asbestos and Air Quality Division  
100 W. Broadway, Suite 5000  
Long Beach, CA 90802-4443

Client Number: 5115  
Report Number: 226543  
Date Received: 12/16/94

Lab Number: 29402089  
Sample Number: 321-7  
P.O. Num: 94S-0005-LB2  
Job ID: 94S-0055-DC4/94-9030-05  
Site: George AFB - Building 321, Offices

Date Collected: 12/15/94

Location: Overhang, north corner, textured stucco.

Gross Description: Tan cementitious material.

**Comments:**

**Microscopic Description**

**TOTAL ASBESTOS PRESENT:**

Chrysotile  
Amosite

Non-Det. %  
Non-Det. %  
%  
%

Non-Det. %

**TOTAL NON-ASBESTOS FIBROUS MATERIAL PRESENT:**

Cellulose  
Fibrous Glass

Trace %  
Non-Det. %  
%  
%

Trace %

**TOTAL NON-ASBESTOS NONFIBROUS MATERIAL PRESENT:**

99-100 %

Analytical results and reports are generated by Forensic analytical at the request of and for the exclusive use of the person or entity (client) named on such report. Results, reports or copies of same will not be released by Forensic Analytical to any third party without prior written request from client. This report applies only to the sample(s) tested. Supporting laboratory documentation is available upon request. This report must not be reproduced except in full with approval from Forensic Analytical. The client is solely responsible for the use and interpretation of test results and reports requested from Forensic Analytical. This report must not be used by the client to claim product endorsement by NVLAP or any agency of the U.S. Government. Forensic Analytical is not able to assess the degree of hazard resulting from materials analyzed. Samples submitted to Forensic Analytical are retained for a period of six months and then disposed of according to all state and federal guidelines.



**Forensic Analytical**  
Analytical Report

San Francisco • 3777 Depot Road, Suite 409, Hayward, CA 94545 • Phone 510/887-8828 • Fax 510/887-4218  
Los Angeles • 19443 Laurel Park Road, Suite 101, Rancho Dominguez, CA, 90220 • Phone 310/763-2374 • Fax 310/763-86

**Bulk Material Analysis**  
Method: 40 CFR 763, Subpart F, Appendix A (AHERA)

**Client:**

The Earth Technology Corporation  
Asbestos and Air Quality Division  
100 W. Broadway, Suite 5000  
Long Beach, CA 90802-4443

Client Number: 5115  
Report Number: 226543  
Date Received: 12/16/94

Lab Number: 29402090  
Sample Number: 321-8  
P.O. Num: 94S-0005-LB2  
Job ID: 94S-0055-DC4/94-9030-05  
Site: George AFB - Building 321, Offices

Date Collected: 12/15/94

Location: Overhang, south corner, textured stucco.

Gross Description: Tan cementitious material.

**Comments:**

**Microscopic Description**

**TOTAL ASBESTOS PRESENT:**

Chrysotile  
Amosite

Non-Det. %  
Non-Det. %  
%  
%

Non-Det. %

**TOTAL NON-ASBESTOS FIBROUS MATERIAL PRESENT:**

Cellulose  
Fibrous Glass

Trace %  
Non-Det. %  
%  
%

Trace %

**TOTAL NON-ASBESTOS NONFIBROUS MATERIAL PRESENT:**

99-100 %

Analytical results and reports are generated by Forensic analytical at the request of and for the exclusive use of the person or entity (client) named on such report. Results, reports or copies of same will not be released by Forensic Analytical to any third party without prior written request from client. This report applies only to the sample(s) tested. Supporting laboratory documentation is available upon request. This report must not be reproduced except in full with approval from Forensic Analytical. The client is solely responsible for the use and interpretation of test results and reports requested from Forensic Analytical. This report must not be used by the client to claim product endorsement by NVLAP or any agency of the U.S. Government. Forensic Analytical is not able to assess the degree of hazard resulting from materials analyzed. Samples submitted to Forensic Analytical are retained for a period of six months and then disposed of according to all state and federal guidelines.





**Forensic Analytical**  
Analytical Report

San Francisco • 3777 Depot Road, Suite 409, Hayward, CA 94545 • Phone 510/887-8828 • Fax 510/887-4218  
Los Angeles • 19443 Laurel Park Road, Suite 101, Rancho Dominguez, CA, 90220 • Phone 310/763-2374 • Fax 310/763-8684

**Bulk Material Analysis**  
Method: 40 CFR 763, Subpart F, Appendix A (AHERA)

Client:  
The Earth Technology Corporation  
Asbestos and Air Quality Division  
100 W. Broadway, Suite 5000  
Long Beach, CA 90802-4443

Client Number: 5115  
Report Number: 226543  
Date Received: 12/16/94

Lab Number: 29402091  
Sample Number: 321-9  
P.O. Num: 94S-0005-LB2  
Job ID: 94S-0055-DC4/94-9030-05  
Site: George AFB - Building 321, Offices

Date Collected: 12/15/94

Location: Overhang, west corner, textured stucco.

Gross Description: Tan cementitious material.

Comments:

**Microscopic Description**

**TOTAL ASBESTOS PRESENT:**  
Chrysotile  
Amosite

Non-Det. %  
Non-Det. %  
%  
%

Non-Det. %

**TOTAL NON-ASBESTOS FIBROUS MATERIAL PRESENT:**  
Cellulose  
Fibrous Glass

Trace %  
Non-Det. %  
%  
%

Trace %

**TOTAL NON-ASBESTOS NONFIBROUS MATERIAL PRESENT:**

99-100 %

Analytical results and reports are generated by Forensic analytical at the request of and for the exclusive use of the person or entity (client) named on such report. Results, reports or copies of same will not be released by Forensic Analytical to any third party without prior written request from client. This report applies only to the sample(s) tested. Supporting laboratory documentation is available upon request. This report must not be reproduced except in full with approval from Forensic Analytical. The client is solely responsible for the use and interpretation of test results and reports requested from Forensic Analytical. This report must not be used by the client to claim product endorsement by NVLAP or any agency of the U.S. Government. Forensic Analytical is not able to assess the degree of hazard resulting from materials analyzed. Samples submitted to Forensic Analytical are retained for a period of six months and then disposed of according to all state and federal guidelines.



**Forensic Analytical**  
Analytical Report

San Francisco • 3777 Depot Road, Suite 409, Hayward, CA 94545 • Phone 510/887-8828 • Fax 510/887-4218  
Los Angeles • 19443 Laurel Park Road, Suite 101, Rancho Dominguez, CA, 90220 • Phone 310/763-2374 • Fax 310/763-8684

**Bulk Material Analysis**  
Method: 40 CFR 763, Subpart F, Appendix A (AHERA)

**Client:**

The Earth Technology Corporation  
Asbestos and Air Quality Division  
100 W. Broadway, Suite 5000  
Long Beach, CA 90802-4443

Client Number: 5115  
Report Number: 226543  
Date Received: 12/16/94

-----  
Lab Number: 2940202  
Sample Number: 321-10  
P.O. Num: 94S-0005-LB2  
Job ID: 94S-0055-DC4/94-9030-05  
Site: George AFB - Building 321, Offices

Date Collected: 12/15/94

Location: Overhang, east corner, textured stucco.

Gross Description: Tan cementitious material.

**Comments:**

**Microscopic Description**

**TOTAL ASBESTOS PRESENT:**

Chrysotile  
Amosite

Non-Det. %

Non-Det. %

%

%

Non-Det. %

**TOTAL NON-ASBESTOS FIBROUS MATERIAL PRESENT:**

Cellulose  
Fibrous Glass

Trace %

Non-Det. %

%

%

Trace %

**TOTAL NON-ASBESTOS NONFIBROUS MATERIAL PRESENT:**

99-100 %

-----  
Analytical results and reports are generated by Forensic analytical at the request of and for the exclusive use of the person or entity (client) named on such report. Results, reports or copies of same will not be released by Forensic Analytical to any third party without prior written request from client. This report applies only to the sample(s) tested. Supporting laboratory documentation is available upon request. This report must not be reproduced except in full with approval from Forensic Analytical. The client is solely responsible for the use and interpretation of test results and reports requested from Forensic Analytical. This report must not be used by the client to claim product endorsement by NVLAP or any agency of the U.S. Government. Forensic Analytical is not able to assess the degree of hazard resulting from materials analyzed. Samples submitted to Forensic Analytical are retained for a period of six months and then disposed of according to all state and federal guidelines.



**Forensic Analytical**  
Analytical Report

San Francisco • 3777 Depot Road, Suite 409, Hayward, CA 94545 • Phone 510/887-8828 • Fax 510/887-4218  
Los Angeles • 19443 Laurel Park Road, Suite 101, Rancho Dominguez, CA, 90220 • Phone 310/763-2374 • Fax 310/763-861

**Bulk Material Analysis**  
Method: 40 CFR 763, Subpart F, Appendix A (AHERA)

**Client:**

The Earth Technology Corporation  
Asbestos and Air Quality Division  
100 W. Broadway, Suite 5000  
Long Beach, CA 90802-4443

Client Number: 5115  
Report Number: 226543  
Date Received: 12/16/94

Lab Number: 29402093  
Sample Number: 321-11  
P.O. Num: 94S-0005-LB2  
Job ID: 94S-0055-DC4/94-9030-05  
Site: George AFB - Building 321, Offices

Date Collected: 12/15/94

Location: Overhang, middle south, textured stucco.

Gross Description: Tan cementitious material.

**Comments:**

**Microscopic Description**

**TOTAL ASBESTOS PRESENT:**

Chrysotile  
Amosite

Non-Det. %  
Non-Det. %  
%  
%

Non-Det. %

**TOTAL NON-ASBESTOS FIBROUS MATERIAL PRESENT:**

Cellulose  
Fibrous Glass

Trace %  
Non-Det. %  
%  
%

Trace %

**TOTAL NON-ASBESTOS NONFIBROUS MATERIAL PRESENT:**

99-100 %

Analytical results and reports are generated by Forensic Analytical at the request of and for the exclusive use of the person or entity (client) named on such report. Results, reports or copies of same will not be released by Forensic Analytical to any third party without prior written request from client. This report applies only to the sample(s) tested. Supporting laboratory documentation is available upon request. This report must not be reproduced except in full with approval from Forensic Analytical. The client is solely responsible for the use and interpretation of test results and reports requested from Forensic Analytical. This report must not be used by the client to claim product endorsement by NVLAP or any agency of the U.S. Government. Forensic Analytical is not able to assess the degree of hazard resulting from materials analyzed. Samples submitted to Forensic Analytical are retained for a period of six months and then disposed of according to all state and federal guidelines.



**Forensic Analytical**  
Analytical Report

San Francisco • 3777 Depot Road, Suite 409, Hayward, CA 94545 • Phone 510/887-8828 • Fax 510/887-4218  
Los Angeles • 19443 Laurel Park Road, Suite 101, Rancho Dominguez, CA, 90220 • Phone 310/763-2374 • Fax 310/763-866

**Bulk Material Analysis**  
Method: 40 CFR 763, Subpart F, Appendix A (AHERA)

**Client:**

The Earth Technology Corporation  
Asbestos and Air Quality Division  
100 W. Broadway, Suite 5000  
Long Beach, CA 90802-4443

Client Number: 5115  
Report Number: 226543  
Date Received: 12/16/94

-----  
Lab Number: 29402094  
Sample Number: 321-12  
P.O. Num: 94S-0005-LB2  
Job ID: 94S-0055-DC4/94-9030-05  
Site: George AFB - Building 321, Offices

Date Collected: 12/15/94

Location: Overhang, middle west, textured stucco.

Gross Description: Tan cementitious material.

**Comments:**

**Microscopic Description**

**TOTAL ASBESTOS PRESENT:**

Chrysotile  
Amosite

Non-Det. %  
Non-Det. %  
%  
%

Non-Det. %

**TOTAL NON-ASBESTOS FIBROUS MATERIAL PRESENT:**

Cellulose  
Fibrous Glass

Trace %  
Non-Det. %  
%  
%

Trace %

**TOTAL NON-ASBESTOS NONFIBROUS MATERIAL PRESENT:**

99-100 %

-----  
Analytical results and reports are generated by Forensic Analytical at the request of and for the exclusive use of the person or entity (client) named on such report. Results, reports or copies of same will not be released by Forensic Analytical to any third party without prior written request from client. This report applies only to the sample(s) tested. Supporting laboratory documentation is available upon request. This report must not be reproduced except in full with approval from Forensic Analytical. The client is solely responsible for the use and interpretation of test results and reports requested from Forensic Analytical. This report must not be used by the client to claim product endorsement by NVLAP or any agency of the U.S. Government. Forensic Analytical is not able to assess the degree of hazard resulting from materials analyzed. Samples submitted to Forensic Analytical are retained for a period of six months and then disposed of according to all state and federal guidelines.



**Forensic Analytical**  
Analytical Report

San Francisco • 3777 Depot Road, Suite 409, Hayward, CA 94545 • Phone 510/887-8828 • Fax 510/887-4218  
Los Angeles • 19443 Laurel Park Road, Suite 101, Rancho Dominguez, CA, 90220 • Phone 310/763-2374 • Fax 310/763-866

**Bulk Material Analysis**  
Method: 40 CFR 763, Subpart F, Appendix A (AHERA)

**Client:**

The Earth Technology Corporation  
Asbestos and Air Quality Division  
100 W. Broadway, Suite 5000  
Long Beach, CA 90802-4443

Client Number: 5115  
Report Number: 226543  
Date Received: 12/16/94

-----  
Lab Number: 29402095  
Sample Number: 321-13  
P.O. Num: 94S-0005-LB2  
Job ID: 94S-0055-DC4/94-9030-05  
Site: George AFB - Building 321, Offices

Date Collected: 12/15/94

Location: Overhang, middle north, textured stucco.

Gross Description: Tan cementitious material.

**Comments:**

**Microscopic Description**

-----  
**TOTAL ASBESTOS PRESENT:**

Chrysotile  
Amosite

Non-Det. %  
Non-Det. %  
%  
%

Non-Det. %

**TOTAL NON-ASBESTOS FIBROUS MATERIAL PRESENT:**

Cellulose  
Fibrous Glass

Trace %  
Non-Det. %  
%  
%

Trace %

**TOTAL NON-ASBESTOS NONFIBROUS MATERIAL PRESENT:**

99-100 %

-----  
Analytical results and reports are generated by Forensic analytical at the request of and for the exclusive use of the person or entity (client) named on such report. Results, reports or copies of same will not be released by Forensic Analytical to any third party without prior written request from client. This report applies only to the sample(s) tested. Supporting laboratory documentation is available upon request. This report must not be reproduced except in full with approval from Forensic Analytical. The client is solely responsible for the use and interpretation of test results and reports requested from Forensic Analytical. This report must not be used by the client to claim product endorsement by NVLAP or any agency of the U.S. Government. Forensic Analytical is not able to assess the degree of hazard resulting from materials analyzed. Samples submitted to Forensic Analytical are retained for a period of six months and then disposed of according to all state and federal guidelines.

Asbestos and Air Quality Division, Western Region  
100 W. Broadway • Suite 5000 • Long Beach, CA 90802-4443

Mail Post Office Box 22785, Long Beach, CA 90801-5785  
Telephone: (310) 495-4449 (TDD) 821-7062 / Fax: (310) 495-7148


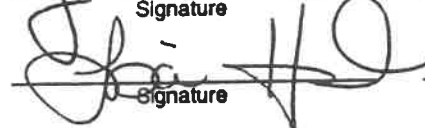
Facility: 321 Wing Hqs Functional Space: OFFICE  
Client: GAFB Project Number: 94-9030-03  
Taken By: J. Lumpkin / C. Bove Date Sampled: 10-18-94

Sample No.	Sample Location	Homo I.D.#	Material Type	Description	Asbestos Detected	
					Y	N
321 01	Hallway 2nd fl		AGJ	12" fissured		
02	Hallway 1st fl					
03	Hallway Basement					
04	Rm 1		AET	2x4 fissured		
05	Rm 2					
06	Rm 3					

Analytical Method: Polarized Light Microscopy

Sample Receiver: The Earth Technology Corporation • 100 W. Broadway • Suite 5000 • Long Beach, CA 90802-4443

### Chain of Possession:

1.		<u>Tech</u>	<u>10-18-94</u>
	Signature	Title	Inclusive Dates
2.		<u>Fasi</u>	<u>10/25/94</u>
	Signature	Title	Inclusive Dates
3.			
	Signature	Title	Inclusive Dates

# Bulk Sample Log



Asbestos and Air Quality Division, Western Region  
100 W. Broadway • Suite 5000 • Long Beach, CA 90802-4443

Mail Post Office Box 22785, Long Beach, CA 90801-5785  
Telephone: (310) 495-4449, (714) 821-7062 / Fax: (310) 495-7148

Facility: Bldg 321 Functional Space: OFF: CES  
Client: GAFB Project Number: 94-9030-05  
Taken By: J. Lumpkin Date Sampled: 12-15-94

Sample No.	Sample Location	Material Type	Description	Material	Quantity
321-7	OVERhang North corner	Stucco	Textured		
8	OVERhang South corner				
9	OVERhang West corner				
10	OVERhang East corner				
11	OVERhang middle South				
12	OVERhang middle West				
13	OVERhang middle North				

Analytical Method: Polarized Light Microscopy

Sample Receiver: EARTH TECH • 100 W. Broadway • Suite 5000 • Long Beach, CA 90802-4443

### Chain of Possession:

1.		<u>Tech</u>	<u>12-15-94</u>
	Signature	Title	Inclusive Dates
2.		<u>CSR</u>	<u>12/14/94</u>
	Signature	Title	Inclusive Dates
3.			
	Signature	Title	Inclusive Dates