



Conference Room D
14343 Civic Drive
Victorville, CA
www.victorvilleca.gov

COMMUNITY SERVICES ADVISORY COMMITTEE

**Special Meeting Agenda
Monday, July 17, 2023**

4:00 p.m. Regular Session

In compliance with the Americans with Disabilities Act, if you need special assistance to participate in this meeting, please contact the (760) 243-1969 no later than 72 hours prior to the meeting.

4:00 p.m. Regular Session

Call to Order

Roll Call

Agenda Items

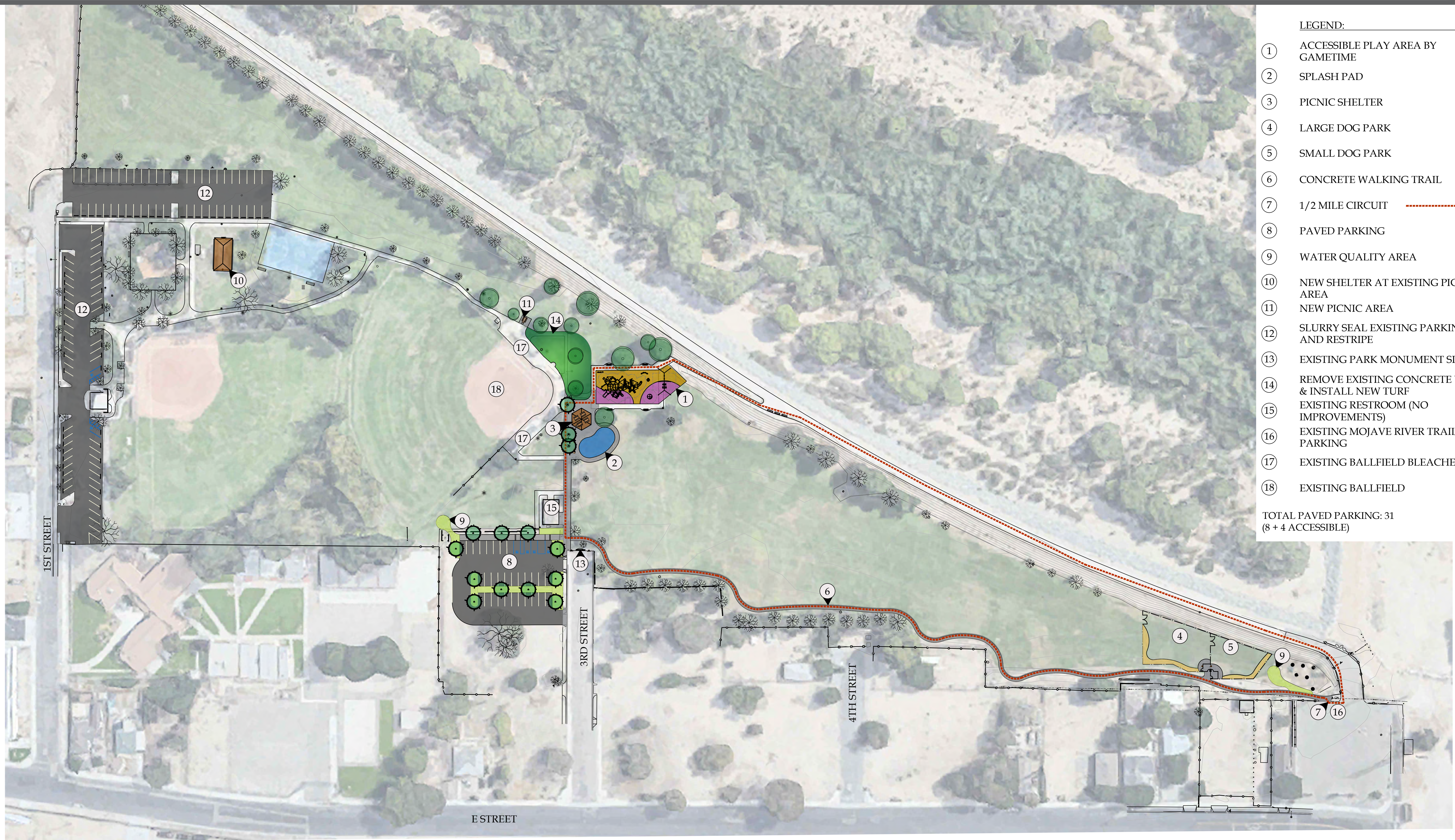
1. Eva Dell Park Concept Design

Committee Member Reports/Comments

Staff Reports/Comments

Public Comments

Attachment A

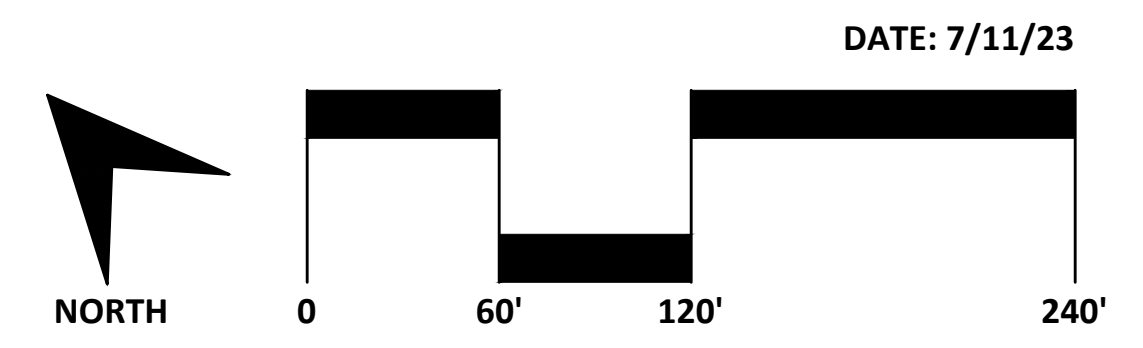


- LEGEND:**
- ① ACCESSIBLE PLAY AREA BY GAMETIME
 - ② SPLASH PAD
 - ③ PICNIC SHELTER
 - ④ LARGE DOG PARK
 - ⑤ SMALL DOG PARK
 - ⑥ CONCRETE WALKING TRAIL
 - ⑦ 1/2 MILE CIRCUIT -----
 - ⑧ PAVED PARKING
 - ⑨ WATER QUALITY AREA
 - ⑩ NEW SHELTER AT EXISTING PICNIC AREA
 - ⑪ NEW PICNIC AREA
 - ⑫ SLURRY SEAL EXISTING PARKING LOT AND RESTRIPE
 - ⑬ EXISTING PARK MONUMENT SIGN
 - ⑭ REMOVE EXISTING CONCRETE WALK & INSTALL NEW TURF
 - ⑮ EXISTING RESTROOM (NO IMPROVEMENTS)
 - ⑯ EXISTING MOJAVE RIVER TRAIL PARKING
 - ⑰ EXISTING BALLFIELD BLEACHERS
 - ⑱ EXISTING BALLFIELD
- TOTAL PAVED PARKING: 31
(8 + 4 ACCESSIBLE)

CONCEPTUAL LANDSCAPE PLAN A

EVA DELL PARK IMPROVEMENTS

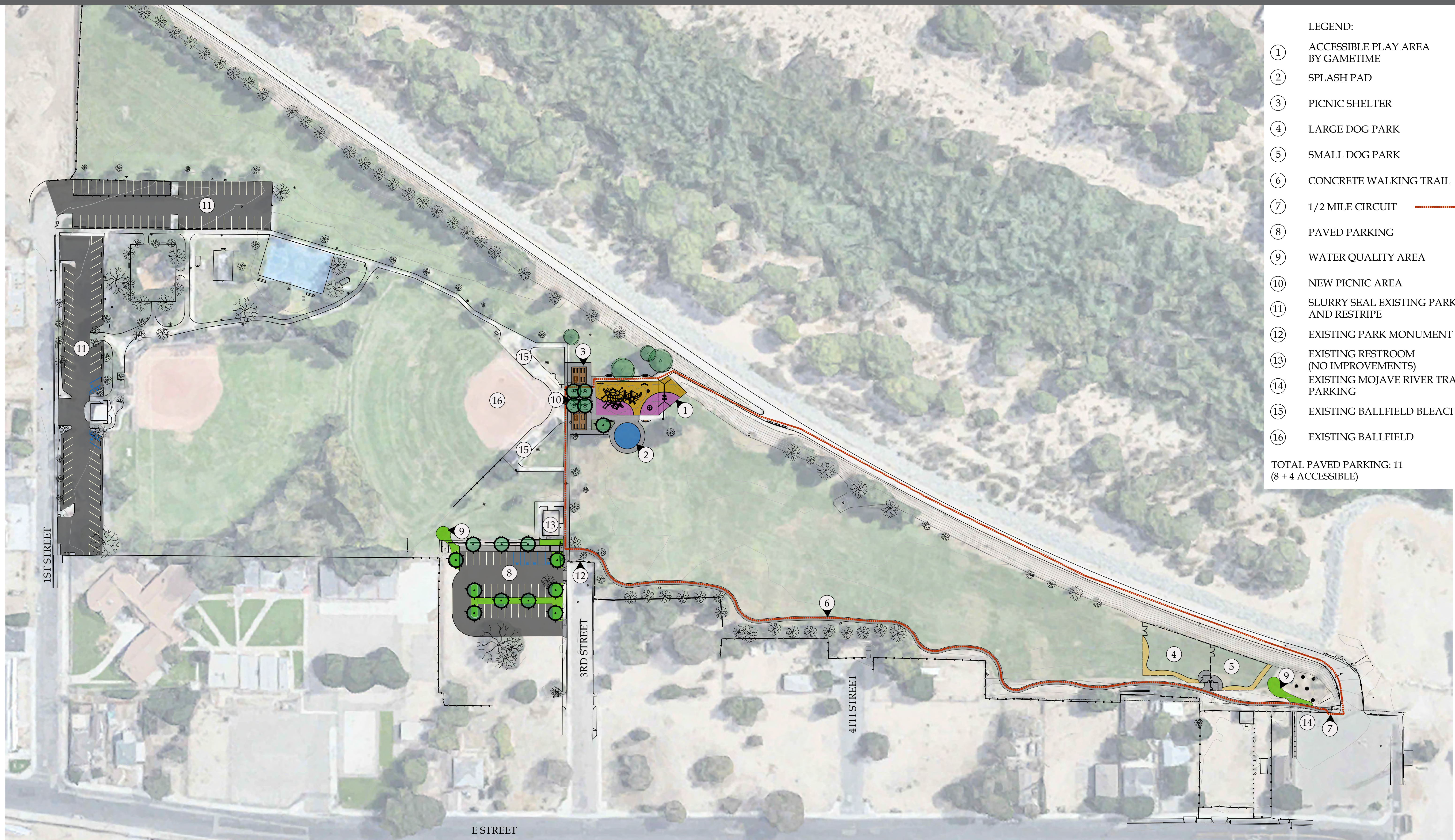
CITY OF VICTORVILLE



DATE: 7/11/23



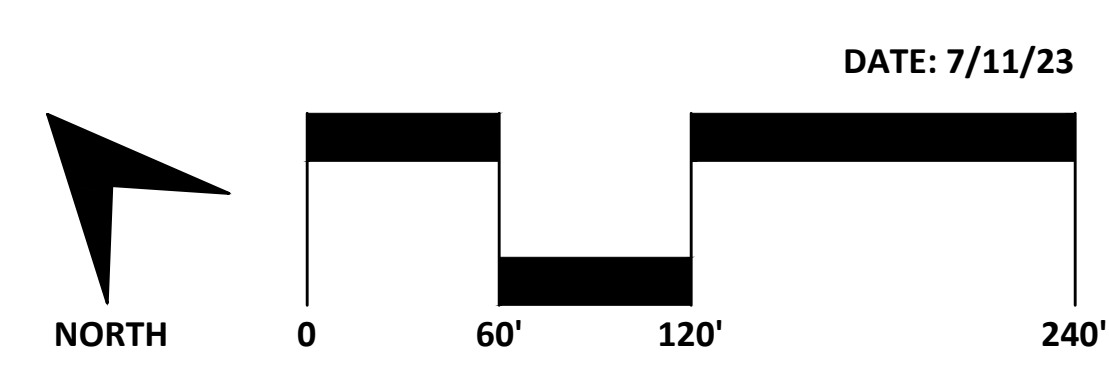
Attachment B



- LEGEND:
- ① ACCESSIBLE PLAY AREA BY GAMETIME
 - ② SPLASH PAD
 - ③ PICNIC SHELTER
 - ④ LARGE DOG PARK
 - ⑤ SMALL DOG PARK
 - ⑥ CONCRETE WALKING TRAIL
 - ⑦ 1/2 MILE CIRCUIT
 - ⑧ PAVED PARKING
 - ⑨ WATER QUALITY AREA
 - ⑩ NEW PICNIC AREA
 - ⑪ SLURRY SEAL EXISTING PARKING LOT AND RESTRIPE
 - ⑫ EXISTING PARK MONUMENT SIGN
 - ⑬ EXISTING RESTROOM (NO IMPROVEMENTS)
 - ⑭ EXISTING MOJAVE RIVER TRAIL PARKING
 - ⑮ EXISTING BALLFIELD BLEACHERS
 - ⑯ EXISTING BALLFIELD

TOTAL PAVED PARKING: 11
(8 + 4 ACCESSIBLE)

CONCEPTUAL LANDSCAPE PLAN B
EVA DELL PARK IMPROVEMENTS
 CITY OF VICTORVILLE



DATE: 7/11/23



Attachment C

