



# The City of Victorville

Established September 21, 1962  
 County of San Bernardino | State of California  
 City Area: 73.97 Square Miles  
 Sphere of Influence: 107.62 Square Miles

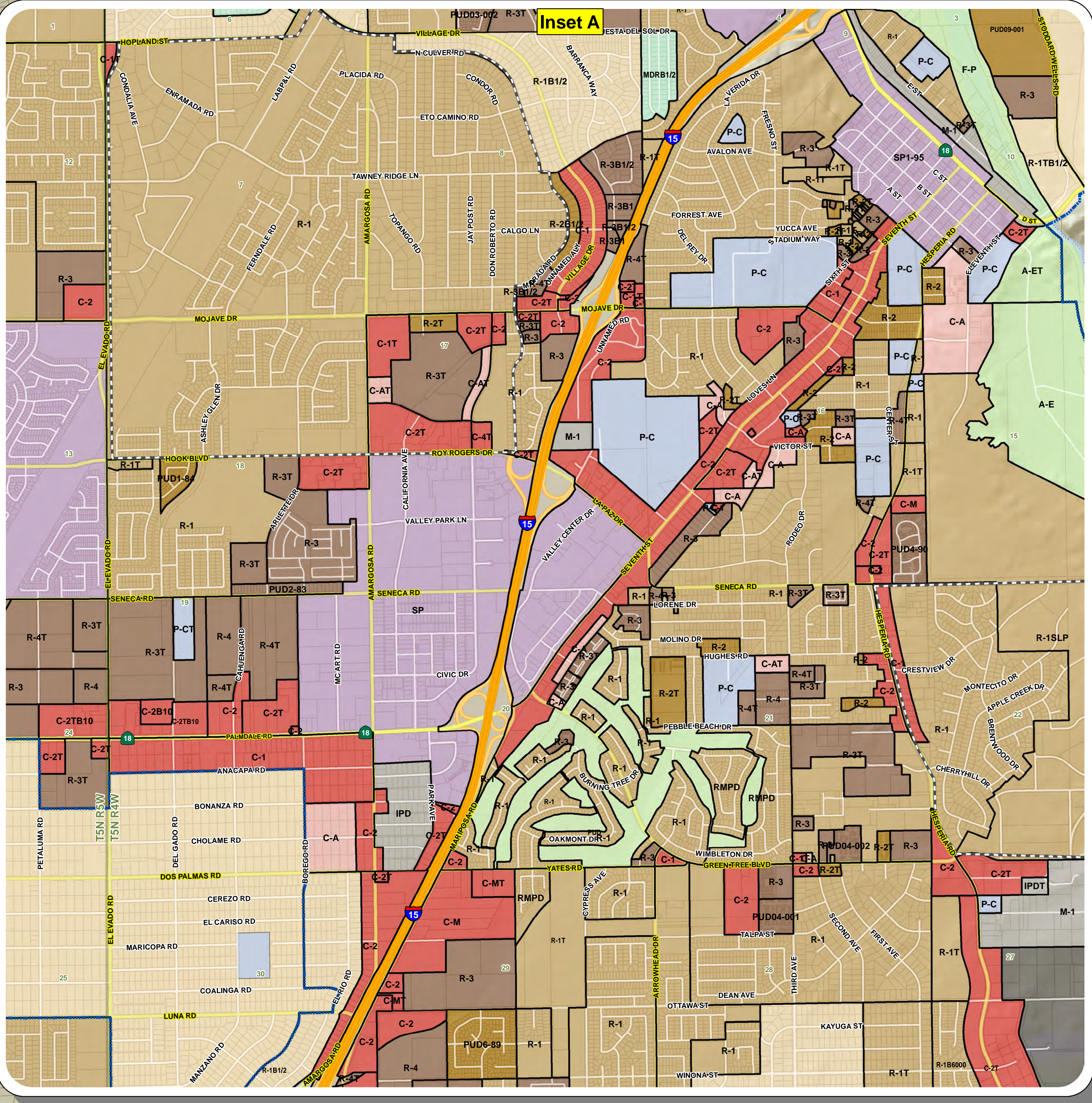
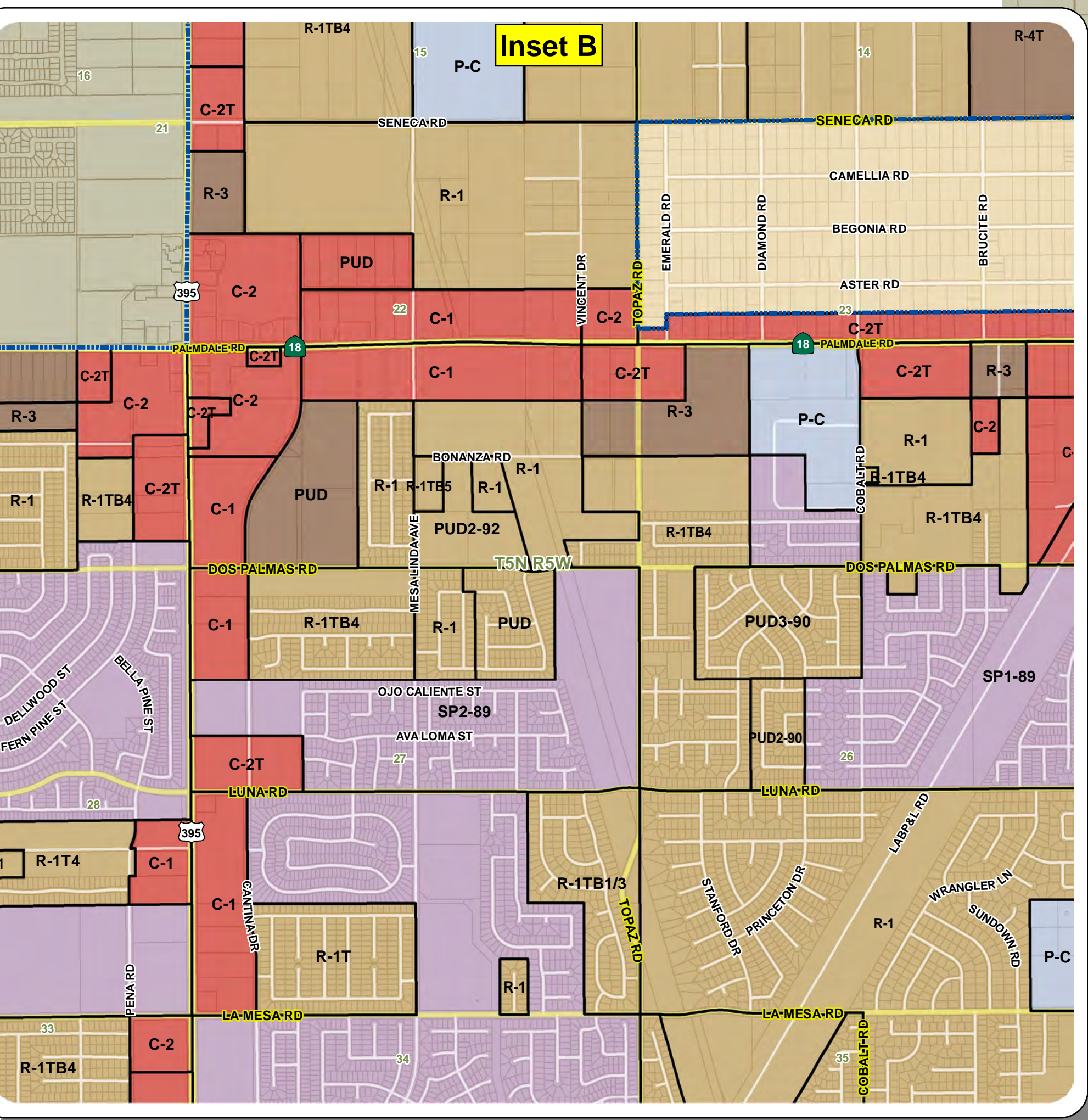
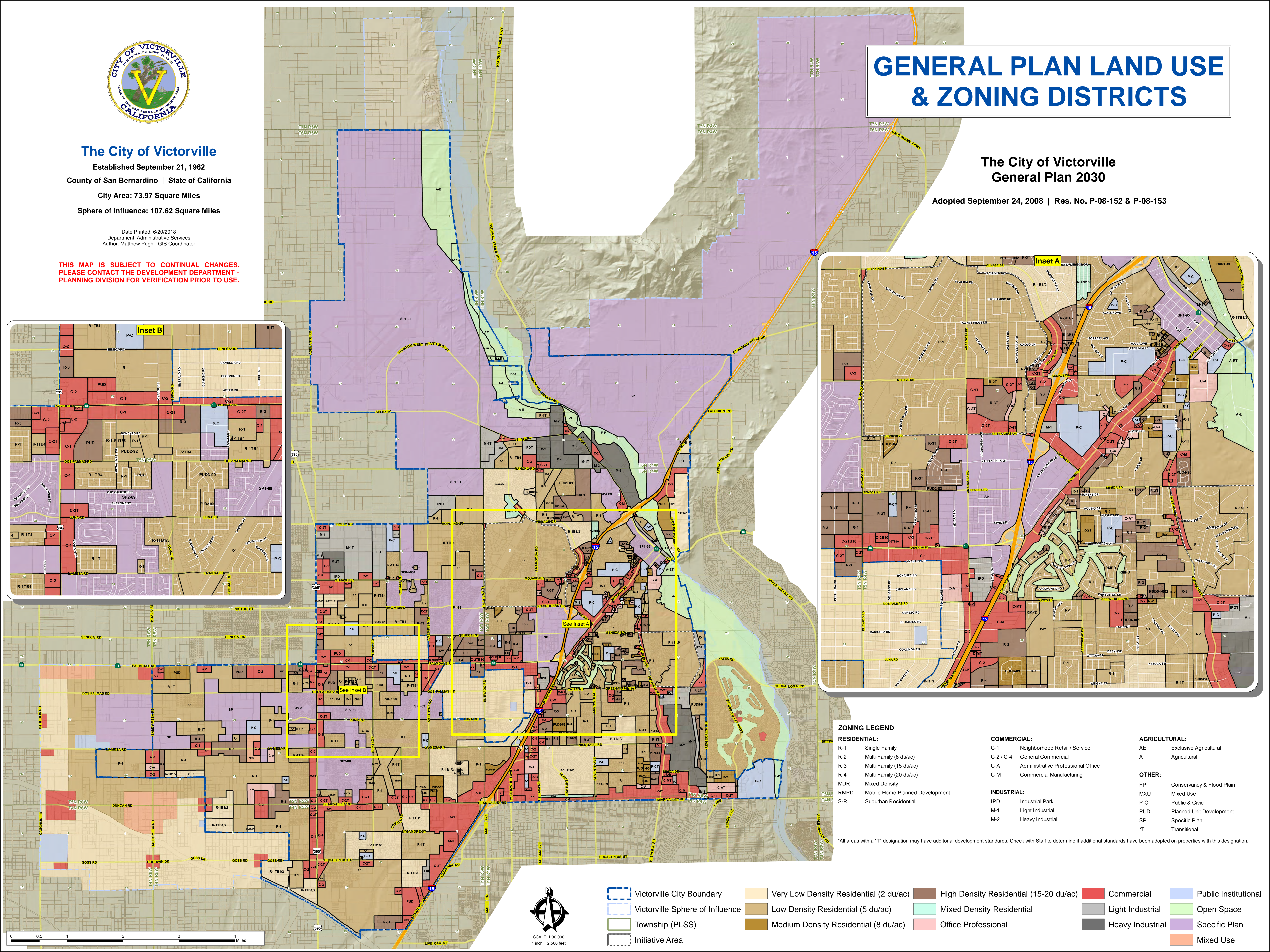
Date Printed: 6/20/2018  
 Department: Administrative Services  
 Author: Matthew Pugh - GIS Coordinator

**THIS MAP IS SUBJECT TO CONTINUAL CHANGES.  
 PLEASE CONTACT THE DEVELOPMENT DEPARTMENT -  
 PLANNING DIVISION FOR VERIFICATION PRIOR TO USE.**

# GENERAL PLAN LAND USE & ZONING DISTRICTS

## The City of Victorville General Plan 2030

Adopted September 24, 2008 | Res. No. P-08-152 & P-08-153



### ZONING LEGEND

<b>RESIDENTIAL:</b>	<b>COMMERCIAL:</b>	<b>AGRICULTURAL:</b>
R-1 Single Family	C-1 Neighborhood Retail / Service	AE Exclusive Agricultural
R-2 Multi-Family (8 du/ac)	C-2 / C-4 General Commercial	A Agricultural
R-3 Multi-Family (15 du/ac)	C-A Administrative Professional Office	
R-4 Multi-Family (20 du/ac)	C-M Commercial Manufacturing	<b>OTHER:</b>
MDR Mixed Density		FP Conservancy & Flood Plain
RMPD Mobile Home Planned Development	<b>INDUSTRIAL:</b>	MXU Mixed Use
S-R Suburban Residential	IPD Industrial Park	P-C Public & Civic
	M-1 Light Industrial	PUD Planned Unit Development
	M-2 Heavy Industrial	SP Specific Plan
		*T Transitional

\*All areas with a "T" designation may have additional development standards. Check with Staff to determine if additional standards have been adopted on properties with this designation.



SCALE: 1:30,000  
 1 inch = 2,500 feet

Victorville City Boundary	Very Low Density Residential (2 du/ac)	High Density Residential (15-20 du/ac)	Commercial	Public Institutional
Victorville Sphere of Influence	Low Density Residential (5 du/ac)	Mixed Density Residential	Light Industrial	Open Space
Township (PLSS)	Medium Density Residential (8 du/ac)	Office Professional	Heavy Industrial	Specific Plan
Initiative Area			Mixed Use	

